



EASTERN SUBURBS  
FOOTBALL ASSOCIATION

Annual Report **2010**



## **EASTERN SUBURBS FOOTBALL ASSOCIATION NOTICE OF ANNUAL GENERAL MEETING**

Notice is hereby given that the Annual General Meeting of the Eastern Suburbs Football Association Incorporated will be held on **Monday 29 November 2010** at the Coogee Diggers at 7.00pm.

### **NOTICE OF BUSINESS**

#### **ITEM 1. APOLOGIES**

#### **ITEM 2. CONFIRMATION**

Confirmation of Minutes of the Annual General Meeting of the Eastern Suburbs Football Association held on 30 November 2009

#### **ITEM 3. REPORT**

To receive reports from the Board of Directors and adopt the 2010 Annual Report

#### **ITEM 4. ACCOUNTS**

To receive and consider the balance sheet, income and expenditure accounts and the report of the auditors for the year ending 30 September 2010

#### **ITEM 5. ELECTIONS**

In accordance with the constitution of the Eastern Suburbs Football Association:-

- a) Election of Life Members [If any]
- b) Elect Board of Directors

#### **ITEM 6. MOTIONS**

Consideration of any motion of which due notice has been given

#### **ITEM 7. CLOSE OF MEETING**



**Aaron Dibdin**  
General Manager  
Monday 1 November 2010

## TABLE OF CONTENTS

04	2010 Office Bearers
04	Life Members
04	Hall of Fame
05	President's Report
07	Message from the Vice President
08	General Manager's Report
<hr/>	
10	Report from Director of Finance including Audited Accounts
24	Message from the Director Special Projects
25	Message from the Director Publicity
26	Football Report
27	Director of Technical Development and Modified Football
28	Director of Corporate Affairs Report
29	Competition Manager Report
31	League Reports
35	ESFA Referees' Branch Report
37	Referees Coordinator's Report
38	Metropolitan League Report
38	Eastern UNSW Lions Report
39	League Tables
53	Association Statistics
55	Partners



The No.1 community participation sport  
in Australia, in the most lucrative socio  
demographic in Sydney.

## 2010 OFFICE BEARERS

<b>President</b>	Peter Hennessy
<b>Vice President</b>	Raff Del Vecchio
<b>Director Corporate Affairs</b>	Michelle Bogatyrov
<b>Director Football</b>	Peter Kriesler
<b>Director Finance</b>	Emmanuel Alfieris
<b>Director of Technical Development &amp; Modified Football</b>	Andrew Field
<b>Director, Publicity</b>	Rick Flowers
<b>Director, Special Projects</b>	Jon Wightwick

### ESFA STAFF

General Manager	Jeff Saul..... to August 2010
	Aaron Dibdin ..... from November 2010
Operations Manager	Aaron Dibdin (Acting) ..... August to November 2010
Competitions Manager	Taleah Neowhouse..... to July 2010
	Adam Giles (Acting) ..... from July 2010
Referees Manager	Adam Giles ..... to July 2010
Referees Coordinator	Gregory Calacouris (Acting)..... from July 2010
Administration Officer	Aaron Dibdin ..... to August 2010
	Ann Lonergan..... from August 2010
Accounts Officer	Jo Curry ..... from February 2010
Technical Director	Blaise Fagan ..... February to August 2010
	Luke Andrews ..... from August 2010

### Football Management Committee

Chair	Peter Kriesler
Men's League Chair	Wally Holzer
Women's League Chair	Julia Chernoukha
Junior League Chair	Danny Said
Girl's League Chair	Frank Friedman

### Referees Standing Committee

Paul Matthews (Chair)	George Magoulis, Louise Mazzaroli
	Paul Bonomy, Stewart Ross, John Franke

### Life Members

Ernie Small \*  
 Bill Vrolyks OAM  
 Ted Simmons OAM  
 Paul Mavromatis  
 Wally Holzer  
 John Velthuys  
 Joe Zammit  
 Sean Fenton  
 David Lewis  
 \* Deceased

### Hall of Fame

Andrew Field (player/  
 administration/coach)  
 John Reid (administration/coach)  
 Pam Chow (administration)  
 Mick Vasin (player/administration)  
 John Nesbit (administration)  
 Charlie Davidson (coach)  
 Jim Zammitt (administration)  
 Tony Pengue (administration)  
 Peter Grunfeld (administration)  
 Michael Lazaridis (administration)  
 George Lundy (coaching/  
 administration)  
 Ron Hoenig (administration)

Simon Phillips (administration)  
 Con Pavlou (administration)  
 Frank Friedman (administration)

### Special Service Awards

Wally Holzer  
 Mark Fragias  
 Michelle Bogatyrov  
 David Lewis  
 Roger Engel  
 Ian Tischman  
 Ron Hoenig  
 George Lundy



## PRESIDENT'S REPORT 2010

Firstly, I'd like to thank everyone involved with ESFA for another interesting year in 2010! We had a lot of challenges to overcome but I sincerely believe that good progress has been made on a number of fronts and we are continuing a trend of development and positivity.

### GROUNDS

Grounds continues to be one of the biggest challenges we face in the Eastern Suburbs. I would like to thank Randwick Council for their outstanding support this year. ESFA is working hard to try to repair a relationship that we didn't realise was damaged until Jeff Saul and I met with the Mayor and Council General Manager at the end of 2009. We will continue to develop that relationship moving forward. Thanks also to the University of NSW for their assistance with grounds this year. We have developed good relationships with both Matraville Sports High School and South Sydney High School and have been provided access to their football grounds. In conjunction with Matraville Sports High, we have recently announced a talented sports program for football which will commence in 2012 for Year 7 students. Already we have had quite a number of expressions of interest for this program. I notice that ESFA clubs are also developing their own relationships with schools to secure grounds for pre-season training.

### COMPETITIONS

The office staff had their work cut out for them this year with the amount of wet weather we had. I am sure not everyone was happy with the outcome of some of the re-scheduling but I know that Peter Kriesler, our Director of Football and his competition managers did the best job they could under difficult circumstances. I trust most teams in the competitions would have enjoyed their season. We got great feedback for the Grand Finals that were run this year and we are planning more progress in that area in 2011. As most people will be aware, Pagewood and Queens Park withdrew their SSG teams from the ESFA competition in 2010. We have taken the matter to Football NSW and also the Football Federation Australia to see if they could help us find a resolution. We will continue to try every avenue to work with both clubs to seek a solution and hope that we can welcome them back to ESFA in 2011.



### REPRESENTATIVE FOOTBALL

ESFA ran its own metro boys teams in 2010 and had remarkable success with our Under 11s crowned NSW Metropolitan League champions! Congratulations to all the boys, coach Ross O' Sullivan and manager Michael Swibel. We are also very pleased with the progress made by the Eastern UNSW Lions, the joint venture Women's and Girl's Super League club with the University of NSW, who had its inaugural season in 2010 and who will be playing out of the newly refurbished David Phillips complex next season. Thanks to all involved with both ventures.

### INVESTMENT AREAS

Football development is one area that the board has earmarked for investment and we made the decision this year to hire a very competent Technical Director in Luke Andrews. Our Director, Technical Development and Modified Football, Andrew Field will talk more about this appointment and duties in his report. We also invested some funds at Matraville Sports High School to assist with ground improvement, part of our strategic plan to develop that facility as a home ground.

## REFEREES

2010 saw more progress and I'd like to congratulate Paul Matthews and the other members of the Referees Standing Committee for their commitment this year. They have established an excellent base in terms of referee coverage. What I would now like to see is improvement in the quality of referees, with more focus on development. I'd also like to take this opportunity to publicly wish David Lewis well. Apparently he is in the hands of Bill Clinton's doctors in New York so could hardly be in a better place. I'd also like to acknowledge the excellent contribution of Louise Mazzaroli, who has stepped down from the committee this year to continue her health battle. As she says at the end of every email, 'football is family' which is a great sentiment. Both David and Louise are very much a part of the referees family and consequently OUR family and we wish them both all the very best.

## JUDICIARY & APPEALS

I'd like to thank our Judiciary Panel, led by Sarina Jackson for their involvement this year. I'd also like to thank Ron Hoenig for running the appeals committee. It is very important that we have a strong yet fair Judiciary as it is ESFA's policy to ensure that bad behaviour of players, officials, spectators will not be tolerated under any circumstances.

## ESFA OFFICE

Once again, the Association underwent staff turnover at one of the critical times of the season. Jeff Saul and Taleah Neowhouse left the organisation at a similar time and were replaced with Aaron Dibdin and Adam Giles in acting roles. Not only did both guys get us through the Finals Series and close out the season smoothly, as was their brief from the Board, but they also got very positive feedback from a lot of clubs on how they ran the Finals Series. I would like to thank Jeff Saul for his excellent contribution during a difficult two year tenure to get the organisation back on its feet and Taleah for her contribution in the office, with competitions and for getting the White Knights program for children with special needs off the ground. The ESFA Board recently appointed Aaron Dibdin as our new General Manager and we have every confidence that we have someone who is passionate about ESFA and will do a fantastic job for us. Aaron is in the process of recruiting a full time competitions manager.

## ESFA BOARD

I'd especially like to thank my fellow board members Raff Del Vecchio, Jon Wightwick, Andrew Field, Rick Flowers, Michelle Bogatyrov, Peter Kriesler and Emmanuel Alfieris for the commitment they have shown over the last twelve months. Discussion in the ESFA boardroom is often robust and we don't all always agree on every topic but I am certain that all members of the 2010 Board were there for the right reasons, had a genuine interest in developing football and had no hidden agendas. There will be changes on the Board for 2011 and I am hoping that whoever comes in will have the same progressive attitude as the outgoing Board members had. I'd like to wish both Raff and Rick all the best with your future endeavours.

## SYDNEY FC

Our relationship with Sydney FC gets better and better. We provided them with more Junior Blues than any other Association in Sydney per head of capita and have worked together on a number of projects this year. We want to ensure we continue to develop our relationship there. In 2011, we will look into the feasibility of a co-branded open schools knockout cup competition for different age groups.

## VOLUNTEERS NEEDED

I would like to request your help in the area of volunteers - we are struggling more and more every year to get people to help us out at an Association level. The expectation is that the office staff and Board will be able to do everything - but that is unfortunately not the case. Our General Manager will be putting together a volunteer program for 2011 and we desperately need your help with this.

## STRATEGIC PLAN

In 2010, a lot of progress has been made to improve the game of football in the Eastern Suburbs. In 2011, the ESFA Board will really drive its strategic plan and my hope for next year is that, in Louise's words, all ESFA clubs will come together and be one football family. If we can achieve that, the sky's the limit.

Yours in football,

**Peter Hennessy**  
President  
ESFA

## VICE PRESIDENT'S REPORT 2010

It is with pleasure that I submit this Vice President's report. Whilst I have been involved with a club for many years I was motivated to get involved at Association level because I saw some great opportunities to improve the game in the East.

To say that 2010 was an interesting time is an understatement. This has been a challenging and enlightening year. What is clear to me is that as an Association we need to be able to come together and work towards common goals. All members of the Association (I use the term 'Association' collectively to include all member clubs, parents, players and Directors) should be concerned with nothing other than making this Association work for the benefit of all footballers in the East. Every player and parent at every club must have the confidence that the Association is here to help and has the best interests of football as the cornerstone of every decision.

We are a diverse community. The diversity is both social and geographical. Within our competitions we have many clubs and teams with differing wants and needs and balancing these desires in the interests of the Association as a whole is challenging and not always achievable nor realistic.

We must continue to listen and work with each other to try to get optimal outcomes. We can't and won't promise to satisfy everyone because quite simply we can't. But we can and we do try our best to work out the best compromises to satisfy as many people as we can as best we can.

But beneath this diversity there is a common truth. It's really quite simple. We're all here for football. Football's best interests are our best interest. When we're out putting nets up on a Saturday morning or when we're running passing drills on a wet Tuesday night we're working for nothing but football.

There are countless people doing unbelievable work all around the Association in all clubs. We need to invest not just our efforts but also our confidence and our trust into this Association. As a community we must recognise that only through united effort can we make our game stronger in the East.



We are a function of our membership and our membership must unite. We cannot progress through division. We cannot serve our members while our membership is fractured. We need to unite around common goals. If people are not satisfied with the performance of any director there are, of course democratic processes in place by which the membership can voice their disapproval. After all the Board serves at the behest of the membership.

Personal circumstances dictate that I will be stepping down this year but my parting plea is that grievances be put aside and dialogue be established which will ensure that this most beautiful of games thrives and flourishes in the Eastern Suburbs. My challenge to the disenfranchised is to become part of the solution not the problem.

**Raff Del Vecchio**  
Vice President

---

A sporting association at the heart of the community and its people, with a strong commitment to grass roots football.

## GENERAL MANAGER'S REPORT

It is an honour to have the chance to report to the Association as the incoming General Manager. This is a great football community we have here in the Eastern Suburbs and I look forward to being in a position to help bring the best out of it that we can.

This season has seen significant change and restructuring, with both the General Manager and Competitions Manager leaving to take up opportunities elsewhere. As an association I'm sure everyone will join me in offering Jeff and Taleah heartfelt thanks for their service.

This report largely offers an account of the work of those who have gone before me - I can't take the credit for the work of my predecessors but I invite the Association to applaud their achievements. Jeff's work and tireless effort for this association is the factor that has driven much of the success of the last two years. This report should therefore be considered a report largely covering his work.

ESFA's most important asset, its people, will determine whether this comes to fruition. Those people must be recognized as more than just ESFA board members and staff. Equally important are the people who run teams and clubs; who officiate at games and who represent the ESFA clubs.

For 2010 ESFA has made some great gains:

- Improved financial processes and revisions to our budget processes
- Improved competition management and review processes led to improved competitions
- A new ESFA board structure greatly improved board participation and performance in 2010
- Planning for a new website and e-newsletter system
- New ESFA involvement in representative football
- Creation of the "ESFA Technical Support Program" under the new ESFA Technical Director

ESFA also worked hard this year to continue, extend and consolidate the important initiatives started in the previous year. In 2010 we did a lot of hard work focused on:

- Consolidation of ESFA Referees Branch
- Re-building and improving ESFA external relations
- Reviewing and improving ESFA constitutional and governance processes

There is a lot more that could be said that would emphasise the sheer scale of work done over the last year. A debt of gratitude is owed to the staff and directors over the last few years for the work that continues on in

sometimes trying circumstances. The fact that we have so many great people involved in football in the Eastern Suburbs for the love of the game is something I feel is our greatest strength. The work done by and on behalf of all these wonderful people is testament to the strength of the community we have here.

The Association is continuing to lock away gains that will make football here better and better over coming years. In many cases, the benefits of the hard work being done will only be truly apparent as time goes on. Change is hard and bringing people with you as change occurs harder still, but we will continue working to make gains for football that will over time benefit players, volunteers and our clubs to make football better and stronger all the time.

Football is a work in progress, the job is never over and the work is never done. Moving forward, ESFA will only be as strong as the aggregate of that contribution and that contribution will only add up together if there is greater respect, understanding and recognition of the different but valuable contribution each group makes when working positively for ESFA.

ESFA has a lot of history and has seen a lot of change. What it hasn't seen much of is stability. The association has seen staff turnover hot and subsequently we have seen a loss of corporate knowledge. We need to build on what has gone before, always looking to add stability and sustainability.

Change is inevitable, but it should be positive as well. As an association we can come together to bring positive change to everything we do. ESFA isn't just here for its members - ESFA is its members. I feel I have good relationships with all of our clubs and look forward to continuing to work with you all to make 2011 a great year for ESFA.

I think we would all like to see the membership come together to unite around a common purpose - football. It's what we are here for, it's what we live and breathe. From Small Sided Football to the Premier League, from the Metro League sides to the White Knights, I look forward to the Association pulling together to make 2011 our best year yet.

**Aaron Dibdin**  
General Manager



---

# FINANCIAL REPORT

FOR THE YEAR ENDED 30 SEPTEMBER 2010

---

## FINANCE DIRECTOR'S REPORT

Dear Members,

May I start by stating that it is a privilege to write my first Finance Director's report for ESFA's Annual Report. Supporting ESFA's financial direction is a challenging responsibility and something I was keen to contribute towards as it underpins much of what ESFA wants to achieve. I would like to thank my predecessor, Jon Wightwick, for his efforts in difficult circumstances in 2009.

As I explained at the midyear update, the true overall financial performance of ESFA is best demonstrated through the cash statement rather than the Profit and Loss. The Profit and Loss is a good statement that best demonstrates detailed expenditure items from year to year. And from a cash perspective it was a difficult year for ESFA and we have taken corrective action.

### Key Operational Financial Highlights for 2010

- Both cash inflows and cash outflows were lower in 2010 due to the new the new ground hire regime desired by most councils where clubs hired their own grounds and reduced junior member numbers
- We spent \$55,675 more than we received this financial year as we made a number of key strategic investments which I've outlined below in "Building the Association"
- These investments were made while also reducing our overall expenses by \$26,665 compared to 2009.
- There were some additional operating expense in 2010. The main additional expenses incurred this year were for -
  - Staff, up \$39,826 from 2009, as we employed a technical director role, increased salaries to comply with industry awards and a prior committed increase for the General Manager position.
  - Referees, up \$33,201, mainly due to more game coverage.
- We took a number of measures in July this year to address the overall expense and efficiency framework for ESFA including -
  - Under-spending on the approved November 2010 budget
  - Reviewing our office structure
- Our cash position throughout the year remained positive avoiding the need to use overdraft funding
- Operationally, ESFA continued to maintain the Working Capital improvements of

the 2009, with accounts receivable and accounts payable well under control.

### Building the Association

From a financial perspective, 2010 has been a year aimed at reviewing the financial framework for the Association so that we can begin to deliver better outcomes for our members. We are sensitive to the cost of football and look to stretch your dollars as much as possible. In addition to running the competitions across all the age groups, the main financial achievements in this regard have been -

- The ability to fund the role of a Technical Director
- The upgrading of grounds at Matraville Sports High and South Sydney High as part of an effort to expand ground availability
- The purchase of a new Marquee for the use of the Association and member clubs
- The revamping of the ESFA website (to be launched for the 2011 season), and
- The ability to fund an operational review of our activities.

### Reviewing our Main Expenditure

The largest expense for the association is the cost of the staff. This has been an area where the board focussed significant attention in 2010. The very first step of the current board was to review the overall people costs as a percentage of turnover. Most not-for-profit organisations have salary levels compared to turnover of between 25%-75%. At 32% including the pass through of Affiliation Fees to Football NSW and 47% ex the pass through, we believe our overall salary expense was at an appropriate level at the beginning of the year.

Later in the year, we then considered the cost of the individual roles by benchmarking with other associations in NSW, a government report on sport role salaries and a sports recruitment firm (including salary comparisons with other codes as well). This effort confirmed that ESFA's salary expenses for individual roles were appropriate and in line with other comparative roles in football and other sports.

Notwithstanding the above, we commissioned an independent expert to review the operational arrangements of our office to ensure we achieved the maximum capacity for the people resources we had in the business. The review has helped us restructure our office arrangements with a cost structure that is consistent with our ability to pay and with the overarching philosophy to keep expenses down for the clubs.

### Improving Financial Operations

Another key area that we reformed in 2010 was creating some key new financial operating guidelines. These included:

- A Budget Framework divided into Mandatory Expenditure, Discretionary Expenditure and a Contingency Buffer of 5%
- Monthly Expenditure vs Budget Report
- Hiring a part time accounts clerk replacing the more expensive external accountant
- An expenditure authority policy for staff, board roles and board members
- A reimbursements policy for board members and other ESFA voluntary roles.



### Moving Forward

There is still more to do. ESFA's financial position is largely a season to season proposition. We have restructured the employee roles to create a lower total employee expense in the lead up to the 2009 season.

The main financial focus for the 2011 season will be to expand alternative sources of funding beyond the member clubs, especially in the area of sponsorships and other non member revenue generating initiatives. This will improve ESFA's long-term financial sustainability and enable us to provide more and better services without financially burdening the members.

The Board remains receptive to any assistance and ideas that will enable ESFA to reduce the cost of football for all participants and deliver better outcomes for members.



**Emmanuel Alfieris**

---

Implementation of quality Small Sided Games program – the future of football development, healthy lifestyle for all children.

**Eastern Suburbs Football Association Inc.  
Committees' Report**

Your committee members submit the financial report of the Eastern Suburbs Football Association Inc. for the financial year ended 30 September 2010

**Committee Members**

The names of committee members throughout the year and at the date of the report are;

**Current Members**

Peter	Hennessy	President
Raff	Del Vecchio	Vice President
Emmanuel	Alfieris	Director of Finance
Michelle	Bogatyrov	Director, Corporate Affairs
Peter	Kriesler	Director of Football
Andrew	Field	Director of Technical Development and Modified Football
Rick	Flowers	Director, Publicity
Jonathan	Wightwick	Director, Special Projects

**Principal Activities**

The principal continuing activities of the association in the course of the financial year were the fostering and control of the game of association football within the boundaries of the Eastern Suburbs as determined by Football NSW.

**Operating Result**

The operating (defecit) for the year was :                 \$   (61,078.16)

**Significant Changes**

No significant change in the nature of these activities occurred during the year.

**Dividends**

The Constitution, Articles & By-Laws of the association prohibit the payment of dividends, accordingly no dividends have been provided for or paid during the financial year.

**After Balance Date Events**

No matters or circumstances have arisen since the end of the financial year which significantly affected or may significantly affect the operations of the Association the results of those operations, or the state of affairs of the Association in future financial years.

**Likely Developments and Results**

There are no known likely developments, other than referred to in this report, that would have a material impact on the association or its operations.

**Indemnifying Officers or Auditor**

No indemnities have been given or insurance premiums paid, during or since the end of the financial year, for any person who is or has been an officer or auditor of the entity, other than as set out below.

During or since the financial year the Association has paid premiums to insure all committee members against liabilities for costs incurred by them in defending any legal proceedings arising out of their conduct while acting in the capacity of committee member of the Association other than involving conduct involving a wilful breach of duty in relation to the Association.

Signed in accordance with a resolution of the Members of the Committee.



Peter Hennessy  
President



Emmanuel Alfieris  
Director of Finance

Signed at Sydney this 8th Day of November 2010



**Eastern Suburbs Football Association Inc.**  
**Income and Expenditure Statement for the year ended 30 September 2010**

	Note	Sept 2010 \$	Sept 2009 \$
<b>Income</b>			
Administrative Income		15,519.64	16,413.86
Clinics & Academies		10,180.57	20,122.24
Equipment Sales		41,812.35	5,141.84
Ground Hire		12,055.47	74,727.62
Interest Received		4,069.16	787.97
Referee Income		170,968.71	142,887.02
Sponsorships & Commissions		5,000.00	8,200.30
Team Fees		878,443.90	852,999.27
		<u>1,138,049.80</u>	<u>1,121,280.12</u>
<b>Expenditure</b>			
Administration Expenses		(9,442.37)	(8,536.51)
Accessibility Soccer Program		(2,210.18)	-
Advertising & Promotion		(13,939.54)	(4,597.73)
Affiliation Fees		(364,546.76)	(347,708.09)
Amortisation & Depreciation		(10,055.84)	(6,783.83)
Audit Fees		(10,000.00)	(8,060.49)
Awards & Prize Money		(34,510.20)	(31,951.38)
Bad Debts		-	-
Beach Football Costs		(227.27)	(6,574.94)
Clinics, Academies & Coaching Fees		(25,682.27)	(17,562.91)
Competition Entry Fees		(3,524.00)	(363.64)
Doubtful Debts Provision		-	9,000.00
Employment Expenses		(306,005.50)	(266,178.81)
Functions & Meetings Costs		(4,574.09)	(2,914.04)
Ground Hire & Maintenance		(70,208.94)	(129,698.33)
Insurances		(3,285.30)	(3,198.31)
Interest Paid		(591.82)	(309.70)
Legal Fees Paid		-	(1,735.27)
Licence Fees		(7,317.27)	(7,519.09)
Maintenance & Repairs		(7,739.59)	(7,384.19)
Metro & Youth League Competition Expenses		(17,368.13)	(1,626.36)
Player Equipment		(53,521.66)	(14,713.24)
Postage, Printing & Stationery		(17,318.93)	(16,407.82)
Referee Expenses		(188,653.11)	(155,451.54)
Rental Expense		(35,990.23)	(31,662.91)
Small Sided Games Support		(252.23)	(1,080.55)
Summer Sixes Competition Expenses		-	(28,838.20)
Staff Training & Amenities		(1,080.14)	(1,189.10)
Telephone & Communications		(11,082.59)	(7,097.62)
		<u>(1,199,127.96)</u>	<u>(1,100,144.60)</u>
Profit/(Deficit) before income tax expense		(61,078.16)	21,135.52
Income tax expense	1	-	-
Profit/(Deficit) after income tax		<u>(61,078.16)</u>	<u>21,135.52</u>
Accumulated Surplus brought forward		97,753.08	76,617.56
Accumulated Surplus carried forward		<u><u>36,674.92</u></u>	<u><u>97,753.08</u></u>

The accompanying notes form part of this financial report

**Eastern Suburbs Football Association Inc.**  
**Assets and Liabilities Statement as at 30 September 2010**

	Note	Sept 2010 \$	Sept 2009 \$
<b>Current Assets</b>			
Cash and Cash Equivalents	2	39,257.59	112,808.26
Trade and Other Receivables	3	69,107.37	62,343.87
Inventories	4	5,727.14	8,396.64
<b>Total Current Assets</b>		<u>114,092.10</u>	<u>183,548.77</u>
<b>Non-current Assets</b>			
Property, Plant & Equipment	5	21,762.63	13,943.43
<b>Total Non-current Assets</b>		<u>21,762.63</u>	<u>13,943.43</u>
<b>Total Assets</b>		135,854.73	197,492.20
<b>Current Liabilities</b>			
Trade and Other Payables	6	75,077.50	75,489.12
Provisions	7	5,602.31	5,750.00
<b>Total Current Liabilities</b>		<u>80,679.81</u>	<u>81,239.12</u>
<b>Non Current Liabilities</b>			
Provisions	8	18,500.00	18,500.00
<b>Total Non-current Liabilities</b>		<u>18,500.00</u>	<u>18,500.00</u>
<b>Total Liabilities</b>		99,179.81	99,739.12
<b>Net Assets</b>		<u><u>36,674.92</u></u>	<u><u>97,753.08</u></u>
<b>Members' Funds</b>			
Accumulated Surplus		36,674.92	97,753.08
<b>Total Members' Funds</b>		<u><u>36,674.92</u></u>	<u><u>97,753.08</u></u>

The accompanying notes form part of this financial report

**Eastern Suburbs Football Association Inc.**  
**Statement of Cash Flows for the year ended 30 September 2010**

	Note	Sept 2010 \$	Sept 2009 \$
<b>Cash Flow from Operating Activities</b>			
Receipts from customers		1,240,990.57	1,402,223.12
Payments to suppliers and employees		(1,300,735.36)	(1,327,400.76)
Interest received		4,069.16	787.97
Net cash provided by/(used in) operating activities	9(b)	<u>(55,675.63)</u>	<u>75,610.33</u>
<b>Cash Flow from Investing Activities</b>			
Payments for property, plant & equipment		(17,875.04)	(4,400.00)
Net cash provided by/(used in) investing activities		<u>(17,875.04)</u>	<u>(4,400.00)</u>
<b>Cash Flows from Financing Activities</b>			
Club bonds received		-	1,000.00
Net cash provided by/(used in) financing activities		<u>-</u>	<u>1,000.00</u>
<b>Net (decrease)/increase in cash held</b>		(73,550.67)	72,210.33
Cash at beginning of year		112,808.26	40,597.93
<b>Cash at end of year</b>	9(a)	<u><u>39,257.59</u></u>	<u><u>112,808.26</u></u>

The accompanying notes form part of this financial report

**Eastern Suburbs Football Association Inc.**  
**Notes to the financial statements**  
**for the year ended 30 September 2010**

**Note 1: Statement of Accounting Policies**

This financial report is a special purpose financial report prepared in order to satisfy the financial reporting requirements of the Associations Incorporation Act New South Wales. The committee has determined that the association is not a reporting entity.

The financial report has been prepared on an accruals basis and is based on historic costs and does not take into account changing money values or, except where specifically stated, current valuations of non-current assets.

The following significant accounting policies, which are consistent with the previous period unless otherwise stated, have been adopted in the preparation of this financial report.

**a) Income Tax**

No provision for income tax has been raised as the entity is exempt from income tax under Section 50-45 of the Income Tax Assessment Act 1997.

**b) Inventories**

Inventories are measured at the lower of cost and net realisable value.

**c) Property, Plant and Equipment (PPE)**

Leasehold improvements and office equipment are carried at cost less, where applicable, any accumulated depreciation.

The depreciable amount of all PPE is depreciated over the useful lives of the assets to the association commencing from the time the asset is held ready for use.

Leasehold improvements are amortised over the shorter of either the unexpired period of the lease or the estimated useful lives of the improvements.

**d) Impairment of Assets**

At each reporting date, the entity reviews the carrying values of its tangible and intangible assets to determine whether there is any indication that those assets have been impaired. If such an indication exists, the recoverable amount of the asset, being the higher of the asset's fair value less costs to sell and value in use, is compared to the asset's carrying value. Any excess of the asset's carrying value over its recoverable amount is expensed to the income statement.

**e) Employee Benefits**

Provision is made for the association's liability for employee benefits arising from services rendered by employees to balance date. Employee benefits have been measured at the amounts expected to be paid when the liability is settled.

**f) Provisions**

Provisions are recognised when the association has a legal or constructive obligation, as a result of past events, for which it is probable that an outflow of economic benefits will result and that outflow can be reliably measured. Provisions are measured at the best estimate of the amounts required to settle the obligation at the end of the reporting period.

**g) Cash and Cash Equivalents**

Cash and cash equivalents include cash on hand, deposits held at-call with banks, other short-term highly liquid investments with original maturities of three months or less.



**Eastern Suburbs Football Association Inc.**  
**Notes to the financial statements**  
**for the year ended 30 September 2010**

**1 Statement of Accounting Policies (continued)**

**h) Revenue and Other Income**

Revenue is measured at the fair value of the consideration received or receivable after taking into account any trade discounts and volume rebates allowed. For this purpose, deferred consideration is not discounted to present values when recognising revenue.

Interest revenue is recognised using the effective interest rate method, which for floating rate financial assets is the rate inherent in the instrument. Dividend revenue is recognised when the right to receive a dividend has been established.

Grant and donation income is recognised when the entity obtains control over the funds, which is generally at the time of receipt.

All revenue is stated net of the amount of goods and services tax (GST).

**i) Leases**

Leases of PPE, where substantially all the risks and benefits incidental to the ownership of the asset, but not the legal ownership, are transferred to the association, are classified as finance leases.

Finance leases are capitalised by recording an asset and a liability at the lower of the amounts equal to the fair value of the leased property or the present value of the minimum lease payments. Including any guaranteed residual values. Lease payments are allocated between the reduction of the lease liability and the lease interest expense for that period.

Leased assets are depreciated on a straight-line basis over the shorter of their estimated useful lives or the lease term.

Lease payments for operating leases, where substantially all the risks and benefits remain with the lessor, are charged as expenses in the periods in which they are incurred.

**j) Goods and Services Tax**

Revenues, expenses and assets are recognised net of the amount of GST, except where the amount of GST incurred is not recoverable from the Tax Office. In these circumstances the GST is recognised as part of the cost of acquisition of the asset or as part of an item of the expense. Receivables and payables in the balance sheet are shown inclusive of GST.

Cash flows are presented in the cash flow statement on a gross basis, except for the GST component of investing and financing activities, which are disclosed as operating cash flows.

**k) Comparative Figures**

When required by Accounting Standards, comparative figures have been adjusted to conform to changes in presentation for the current financial year.

**Eastern Suburbs Football Association Inc.**  
**Notes to the financial statements**  
**for the year ended 30 September 2010**

Note	Sept 2010 \$	Sept 2009 \$
<b>Note 2: Current Assets</b>		
<b>- Cash &amp; Cash Equivalents</b>		
Cash on Hand	510.00	510.00
Cash at Bank	8,368.23	111,418.91
Interest Bearing Deposit	30,379.36	879.35
	<u>39,257.59</u>	<u>112,808.26</u>
<b>Note 3: Current Assets</b>		
<b>-Trade and Other Receivables</b>		
Trade Receivables	62,322.28	57,522.05
Provision for Doubtful Debts	(5,000.00)	(5,000.00)
Other Receivables	1,934.62	836.12
Deposits Paid	9,850.47	8,985.70
	<u>69,107.37</u>	<u>62,343.87</u>
<b>Note 4: Current Assets</b>		
<b>-Inventories</b>		
Goods Held for Re-Sale	<u>5,727.14</u>	<u>8,396.64</u>
	<u>5,727.14</u>	<u>8,396.64</u>
<b>Note 5: Non-current Assets</b>		
<b>- Property, Plant and Equipment</b>		
Office Equipment	48,913.43	31,038.39
Accumulated Depreciation	<u>(31,466.62)</u>	<u>(22,251.99)</u>
	<u>17,446.81</u>	<u>8,786.40</u>
Equipment- at cost	2,850.00	2,850.00
Accumulated Depreciation	<u>(2,850.00)</u>	<u>(2,280.00)</u>
	<u>-</u>	<u>570.00</u>
Memorabilia	5,424.09	5,424.09
Accumulated Depreciation	<u>(1,108.27)</u>	<u>(837.06)</u>
	<u>4,315.82</u>	<u>4,587.03</u>
	<u>21,762.63</u>	<u>13,943.43</u>
<b>Note 6: Current Liabilities</b>		
<b>- Trade and Other Payables</b>		
Trade Creditors	16,897.75	48,918.63
Sundry Creditors and Accrued Expenses	31,597.64	30,142.49
GST Payables	18,289.03	(16,627.31)
Employee Accruals	8,293.08	13,055.31
	<u>75,077.50</u>	<u>75,489.12</u>
<b>Note 7: Current Liabilities</b>		
<b>- Provisions</b>		
Employee Benefits	5,602.31	5,750.00
	<u>5,602.31</u>	<u>5,750.00</u>

**Eastern Suburbs Football Association Inc.**  
**Notes to the financial statements**  
**for the year ended 30 September 2010**

Note	Sept 2010 \$	Sept 2009 \$
<b>Note 8: Non Current Liabilities</b>		
<b>- Provisions &amp; Deferred Revenues</b>		
Provision for Member Bonds	18,500.00	18,500.00
	<u>18,500.00</u>	<u>18,500.00</u>
<b>Note 9: Cash Flow Information</b>		
<b>a) Reconciliation of Cash</b>		
Cash at the end of the financial year as shown in the statements of cash flows is reconciled to the related items in the balance sheet as follows:		
Cash on Hand	510.00	510.00
Cash at Bank	8,368.23	111,418.91
Interest Bearing Deposit	30,379.36	879.35
	<u>39,257.59</u>	<u>112,808.26</u>
<b>b) Reconciliation of Cash Flow from Operations with Operating Profit after Income Tax</b>		
Operating (Deficit)/Surplus after Income Tax	(61,078.16)	21,135.52
Non-cash flows in operating profit		
Depreciation	10,055.84	6,783.83
Doubtful debts	-	(9,000.00)
Provision for annual leave	(147.69)	5,750.00
Changes in assets & liabilities		
(Increase)/Decrease in receivables	(6,763.50)	185,678.81
(Increase)/Decrease in inventories	2,669.50	(8,396.64)
Increase/(Decrease) in sundry creditors and accrued expenses	(411.62)	(79,401.52)
Increase/(Decrease) in deferred revenues	-	(46,939.67)
Cash Flow from Operating Activities	<u>(55,675.63)</u>	<u>75,610.33</u>
<b>Note 10: Capital &amp; Leasing Commitments</b>		
<b>Operating Lease Commitments</b>		
Non-cancellable operating leases contracted for but not		
Being rent of office		
Payable - minimum lease payments		
- not later than 12 months	44,843.25	42,707.86
- later than 12 months but not later than 5 years	15,127.84	59,971.09
- greater than 5 years	-	-
	<u>59,971.09</u>	<u>102,678.95</u>

The property lease is a non-cancellable lease with a three-year term from 1 January 2009, with rent payable monthly in advance. Contingent rental provisions within the lease agreement require that the minimum lease payments shall be increased by 5% per annum. An option exists to renew the lease at the end of the three-year term for an additional term of three years.

**Eastern Suburbs Football Association Inc.  
Statement by Members of the Committee**

The committee has determined that the association is not a reporting entity and that this special purpose financial report should be prepared in accordance with the accounting policies outlined in Note 1 to the financial statements.

In the opinion of the committee the financial report:-

1. Presents a true and fair view of the financial position of Eastern Suburbs Football Association Inc. as at 30 September 2010 and its performance for the year ended on that date.
2. At the date of this statement, there are reasonable grounds to believe that Eastern Suburbs Football Association Inc. will be able to pay its debts as and when they fall due.

This statement is made in accordance with a resolution of the Committee and is signed for and on behalf of the Executive Committee by:-



Peter Hennessy  
President



Emmanuel Alfieris  
Director of Finance

Signed at Sydney this 8th Day of November 2010



# Rohan McCoy B.Bus CA PNA

Accounting, Audit, Taxation & Business Advisory Services  
ABN 55 745 778 871

42 Bonds Rd  
Peakhurst NSW 2210  
PO Box 399  
Petersham NSW 2049  
Tel (02) 9596 1713  
Fax (02) 9596 1714  
Mobile 0412 979 969

[the.auditor@optusnet.com.au](mailto:the.auditor@optusnet.com.au)

## INDEPENDENT AUDIT REPORT TO THE MEMBERS OF EASTERN SUBURBS FOOTBALL ASSOCIATION INC.

### Report on the Financial Report

I have audited the accompanying financial report, being a special purpose financial report, of Eastern Suburbs Football Association Inc. (the association), which comprises the Assets and Liabilities Statement as at 30 September 2010, the Income and Expenditure Statement and Statement of Cash Flows for the year ended 30 September 2010, a summary of significant accounting policies, other explanatory notes and the statement by members of the committee.

### *Committee's Responsibility for the Financial Report*

The committee of the association is responsible for the preparation and fair presentation of the financial report and have determined that the accounting policies described in Note 1 to the financial statements, which form part of the financial report, are consistent with the financial reporting requirements of the Associations Incorporation Act New South Wales 1984 and are appropriate to meet the needs of the members. The committee's responsibilities also include designing, implementing and maintaining internal control relevant to the preparation and fair presentation of the financial report that is free from material misstatement, whether due to fraud or error; selecting and applying appropriate accounting policies; and making accounting estimates that are reasonable in the circumstances.

### *Auditor's Responsibility*

My responsibility is to express an opinion on the financial report based on my audit. No opinion is expressed as to whether the accounting policies used, as described in Note 1, are appropriate to meet the needs of the members. I have conducted My audit in accordance with Australian Auditing Standards. These Auditing Standards require that I comply with relevant ethical requirements relating to audit engagements and plan and perform the audit to obtain reasonable assurance whether the financial report is free from material misstatement

An audit involves performing procedures to obtain audit evidence about the amounts and disclosures in the financial report. The procedures selected depend on the auditor's judgment, including the assessment of the risks of material misstatement of the financial report, whether due to fraud or error. In making those risk assessments, the auditor considers internal control relevant to the entity's preparation and fair presentation of the financial report in order to design audit procedures that are appropriate in the circumstances, but not for the purpose of expressing an opinion on the effectiveness of the entity's internal control. An audit also includes evaluating the appropriateness of accounting policies used and the reasonableness of accounting estimates made by the committee, as well as evaluating the overall presentation of the financial report.

The financial report has been prepared for distribution to members for the purpose of fulfilling the committee's financial reporting under the Associations Incorporation Act New South Wales 1984. I disclaim any assumption of responsibility for any reliance on this report or on the financial report to which it relates to any person other than the members, or for any purpose other than that for which it was prepared.

I believe that the audit evidence I have obtained is sufficient and appropriate to provide a basis for my audit opinion.

### *Independence*

In conducting My audit, I have complied with the independence requirements of Australian professional ethical pronouncements.

### *Auditor's Opinion*

In my opinion, the financial report of Eastern Suburbs Football Association Inc. presents fairly, in all material respects the financial position of Eastern Suburbs Football Association Inc. as of 30 September 2010 and of its financial performance for the year then ended in accordance with the accounting policies described in Note 1 to the financial statements and the Associations Incorporations Act New South Wales 1984.



Rohan John McCoy

Registered Company Auditor

Dated this 8<sup>th</sup> day of November 2010



*Liability limited  
by a scheme  
approved under  
Professional  
Standards  
Legislation*



**CERTIFICATE BY MEMBERS OF THE COMMITTEE**

I, Peter Hennessy of 10/492 Military Rd, Mosman NSW 2088, and I, Emmanuel Alfieris of 1/70 Campsie St, Campsie NSW 2194, certify that:

- a. We are members of the committee of Eastern Suburbs Football Association Inc.
- b. We attended the annual general meeting of the association held on 22 November 2010.
- c. We are authorised by the attached resolution of the committee to sign this certificate.
- d. This annual statement was submitted to the members of the association at its annual general

Signed at Sydney this 8th Day of November 2010



Peter Hennessy  
Committee Member



Emmanuel Alfieris  
Committee Member

## ESFA DIRECTOR SPECIAL PROJECTS REPORT

**My goal as a board member of ESFA is simple.** It's to help improve the football experience for all our members - nothing more nothing less.

My portfolio enables me to influence business development and I believe we are making significant progress in many of the areas that sit outside of our core business, most notably:

- strategic development and planning;
- brand strategy;
- improved communication;
- Sydney FC relationship; and
- sponsorship.

I'm often asked about sponsorship and I can confirm that we are making positive progress in this area. As a business we are keen to develop high quality longer term strategic relationships, rather than chase the easily available short term bucks. The research we have conducted and the proposal we have been formulating will be made available to our member clubs in order to assist them in pursuing their own sponsorship objectives.

Having only lived in Australia for a short time I often look at football through the eyes of my 10 year old son. It's from his experience playing in an ESFA managed competition that I often gauge where we are at as a sport. Many non-football people in our community are quick to knock the beautiful game and I believe this attitude (still held by many) has a direct negative impact on many areas that sit outside of ESFA's control. However, the reality is that we are the number one participation sport in Australia, more people play our great game than the other three codes added together.

It's about time football in the Eastern Suburbs got the respect and the 'fair crack of the whip' it deserves. We can only make this happen if we all work together, after all football is a team game.

**Jon Wightwick**

Director  
ESFA Special Projects



---

## Registered Footballers: Australia - 1 Million, NSW - 204,000, ESFA - 7173



## REPORT FROM DIRECTOR OF PUBLICITY

This year we launched an e-newsletter project. Players, team managers, coaches, club officials, referees, park authorities and prospective sponsors want to know more about what the Association does, and how it adds value to enabling quality football experiences. This newsletter is one way we will communicate better with our members, partners and sponsors.

Clubs, of course, are at the frontline of putting players on the pitch. They recruit players, form teams, appoint team managers and coaches, organise training grounds, acquire uniforms, balls and other 'kit.' The Association is responsible for planning and managing competitions. That involves organising fixtures, match grounds, applying the rules of the game, supporting a judiciary system, liaising with Football NSW, technical and coaching development, and creating new opportunities for football participation in the eastern suburbs. Furthermore, the Association is responsible for selecting and managing the best 11 and 12 year old boys to represent the eastern suburbs in the Metro League. The Association, in partnership with UNSW FC is also creating opportunities for local girls and women to play at an elite level in Women's Super League. Referees, by the way, are managed by an independent Standing Committee.



Some categories of stories and images we have published include:

- Small-sided games
- Coaching coaches
- Referees
- Competition management
- Human interest stories
- Profile of a club
- Indigenous development
- Disability development
- Grounds
- FFA and other grants available for clubs
- Sponsors
- School holiday clinics
- Metro Boys teams
- Women and Girls Super League
- Sydney FC
- Letters to the editor
- President's column

Statistics to date include:

### Newsletter 1

Went to 6,224 members and was opened by 36%

### Newsletter 2

Went to 5,684 members and was opened by 31%

### Rick Flowers

Director of Publicity



## FOOTBALL REPORT

The 2010 Football season was. Overall, a good season, though there were many complications during the season, mainly caused by the need to re-arrange games due to the large number of washouts.

Taleah Neowhouse started the season as Competition Manager, playing an important role in setting up the season's competitions. Unfortunately, she received an offer she could not refuse, and moved on to another code. Her position was extremely ably filled by Adam Giles, who took over the running of the competitions midway through the season, and performed an excellent job making the transition as painless as possible.

Before she left, Taleah was instrumental in setting up the **ESFA White Knights**, which are an Accessible Football Program for people with a disability between the ages of 5-18 years. In this, their inaugural season, the White Knights proved extremely successful, and I am sure that the whole ESFA community joins me in wishing the program every success for the future.

This year's competition was run very well, with very few operational issues. The new refereeing arrangements continued to be a success, with game coverage as high as last season and amongst the highest of any association.

Ground usage has improved significantly with a number of new grounds being added to the ESFA competition.

**Grand Finals:** this year ESFA had 50 grand finals, a number which precludes Grand Finals being played on a single field venue, even if there was a prime ground suitable and available to ESFA. Instead, Grand Finals were played at two multi field venues Heffron Park and David Phillips. Randwick Council was extremely generous in taking one of the main Heffron fields out of commission for the month before our grand finals, so that it was in excellent condition when called on. The advantage of multi field venues is that they lend a true Grand Final atmosphere, with many games and spectators all around at the same time. ESFA hopes to build on this for the 2011 season.

2010 also saw the extension of ESFA's knockout competition, renamed the ESFA **Invitational Cup** to more age groups and also to teams from other associations. It is hoped that the success of this year's competition will lead to further growth in the number of teams competition, with six separate cup division being planned for 2010, youth, all age and over 35s for men and women.

A number of ESFA Champions teams progressed through the early rounds of the **Champions of Champions**, with the Redfern O45s and Queens Park U16s both being unsuccessful Grand Finalists. ESFA also had quality representation in the Football NSW Cup and Kanga Cups

The ESFA 2010 Northharbour U11 representative

squad performed extremely well, finishing Tournament Pool A runners up, and only losing to the eventual winners of the tournament.

ESFA's representative teams all performed well. The ESFA **Under 11 Metropolitan League** reps were crowned Champions of this prestigious Football NSW competition when they won a nail biting penalty shoot out 6 - 5 against St. George Association on Sunday at Lily Homes Stadium, Blacktown; while the Eastern **UNSW Lions** was competitive in all age groups in their first year in the Women's Super League Competition, winning the Reserve Grade Premiership and Grand Final.

**The Eastern UNSW Lions Girl's and Women's Gala Day** on Sunday 12 September was a brilliant success with sunny skies and smiling faces for the entire day. The event was the biggest women's football event ever seen in the Eastern Suburbs with over 60 teams competing on the day, culminating with the Sydney FC Women playing a game against the Lions. The occasion generated enormous goodwill and good publicity for the game. Congratulations are to be given to Jo-Anne Black and her team of "pink hats".

## FOOTBALL MANAGEMENT COMMITTEE

I would like to take this opportunity to clarify the FMC's role and that of the Councils. The Councils discuss matters relating to their competitions, and make decisions, which the Chair of each council brings to the FMC. The FMC looks at these, usually ratifying them, but always making sure that the Councils are not making mutually incompatible decisions. In other words, the main function of the FMC is to coordinate the decisions of the various councils ensuring that they are compatible and that they are achievable with the resources available.

As part of this brief, the FMC also manages the competitions. This often involves making difficult decisions, and this season was no exception. However, I think that the FMC worked extremely diligently and extremely well in making all the competitions run relatively smoothly this year. This is a tribute to the hard work and common sense of everyone involved.

As part of our preparation for the New Year, ESFA ended the season with a series of Council meetings, in order to establish the completion rules for 2011 well in advance. Hopefully, these will be finalised and circulated before the beginning of the next season.

As a result, we have every reason to believe and hope that the 2011 Football season will be bigger and better.

**Peter Kriesler**  
Director of Football

## DIRECTOR OF TECHNICAL DEVELOPMENT

### ESFA BOARD MEMBER RESPONSIBLE FOR COACHING DEVELOPMENT, INTRODUCTION OF SMALL SIDED GAME FORMAT AND METROPOLITAN LEAGUE:

A number of important developments have occurred in the last 12 months, and these will need a committed Board member to continue to push actively from the present time into 2011.

In the period since the 2009 AGM I have chaired five meetings of representatives of the ESFA clubs with SSG teams in the U6 to U10 age groups. All clubs were invited to send representatives. The clubs were presented with various challenges and from the discussions consensus was reached on changes that occurred in the 2010 season. A review in August and then a further meeting in September have discussed the format of the 2011 season. One of the challenges has been the withdrawal of Pagewood and Queens Park players in the U6 to U9 age groups from ESFA. Other challenges have been the number of weekends washed out by rain and the varying application of grading of players and teams by ESFA clubs. The SSG format is in house in the U6 and U7, and interclub on a draw organized by ESFA in the U8, 9 and 10.

In 2010, the SSG format was extended to the U10s playing 9 v 9 on half fields, or fields consisting of goals placed on the edge of the penalty area, playing lengthwise, with the sidelines brought in and marked with cones. In 2011, the same format will be used for the U11, the oldest age group designated by the FFA and FNSW for the SSG format. The format has been a great success in terms of player development and the quality of the games, but problems concerning wash outs, draw changes, grading of teams, variation in the markings of fields and Sunday games have been discussed at length and changes suggested to improve the 2011 season. Similarly with the U8s and U9s, the format is very successful in terms of the quality of play and apparent enjoyment of the children.

The SSG committee decided in 2009 that because there was still a FNSW Champion of Champion competition that Tables would be kept not only in the U10 Division One competition but in all Divisions, but that SF and Final series would only be played in the Division One competition. During midyear many clubs representatives and the FMC members pushed to have SF and Finals in all Divisions. Rained out catch up games were organized by the ESFA office and the



tables finalized at short notice and a single day format for SF and Finals in all U10 Divisions was brought to fruition by the ESFA staff. This was a highly successful 'gala day' event, and should be considered for other age groups. FNSW has recently cancelled the Champion of Champions in the U10 year age group, so further discussions re formats is required for 2011.

It was strongly felt by the SSG committee, that it should become a Council with a Board member chairperson reporting to the FMC.

Negotiations with Matraville Sports High have been held through the year by Jeff Saul, Aaron Dibdin, myself and more recently the new Technical Director with the aim to establish a football program with its own stream of classes, with ESFA providing support in finding football coaches, and providing referee instructional courses, referee experience in local competition, accredited coaching courses and positions in local junior football and advertising and encouragement of local players to consider this program. In addition, there is a program to develop a ground as a top class ground for ESFA games, coaching activities, development squad programs, and Metro team coaching and games. A preliminary notice of this partnering of ESFA and Matraville Sports High has recently been sent out, and a formal proposal is being prepared at present by the Technical Director, ESFA office and myself. There is a pressing need for this to go ahead quickly so that the ground may be available for the Metro program and 2011. The synergies between ESFA and a Matraville Sports High football program are excellent.



The first year of ESFA's coaching program under the first part time appointed Technical Officer was successful in providing a number of grass roots, junior and senior courses and coaching sessions at clubs, but was plagued by the wet weather with cancellations. A new highly credentialed and experienced Technical Director was appointed in August, Luke Andrews, and he has immediately embarked on developing an annual program of coaching courses, development programs for boys and girls, and the program with Matraville High. He has also supervised the trials for the Metropolitan League teams, and is producing appropriate protocols for the selection of coaches and players for these teams, and planning the incoming teams coaching programs.

In the past season I attended some 12 of the ESFA U11 and U12 Metropolitan Teams games, introducing the new Technical Director and liaising between coaches and teams. The U11 team came second in the premiership and won the championship grand final, and the U12s performed creditably in their premiership. My thanks go to Ross Sullivan, Brennan Sharpley and Simon Preston for coaching these teams and to their managers, players and parents for their efforts in representing ESFA and their player development. In August I stepped down from this Board role of being responsible for the Metropolitan League teams, a role which was taken on by Peter Kriesler.

FNSW in the HPU has formed a new technical committee of the representatives of the Associations to coordinate coaching programs across all metropolitan and country Associations. The representatives include coaching and technical directors and Board members with responsibility in this area. There are ongoing discussions re coaching programs for 2011 and the integration of PYL, Metro competitions and P22. In April 2011, a review committee formed by FNSW will deliver recommendations to FNSW which may well require ESFA to manage change in junior and youth football, and the development of successful coaching programs.

I would like to thank Jeff, Aaron and Adam for their support in my role on the Board in 2010.

**Andrew Field**

## DIRECTOR OF CORPORATE AFFAIRS REPORT

As the Board member responsible for the portfolio of Corporate Affairs it is my responsibility to represent ESFA to our external stakeholders and position the Association in a positive light to enhance football within the region and to best represent affiliated clubs. Some of the initiatives which I have been working on in the last 12 months include;

### 1. Maintenance and building relationship with Councils

Clearly one of the biggest stakeholders of ESFA is the many local Councils which we deal with. Whilst it is far to say that our relationship with some councils is better than others we will continue to strive to maintain dialogue with all councils to ensure that we can provide the best football experience to our member clubs. The issue of ground availability has always plagued the area but ESFA will continue to lobby councils for access to more grounds. A tender process is being undertaken for the Chifley Reserve and it is important that ESFA has a seat at the table when these fields are being discussed. We are confident that we can establish to Randwick Council that these fields should be given to the biggest participation sport in the Eastern Suburbs.

### 2. Indigenous program through Sydney FC and Centre of Excellence

A way in which ESFA can show it is a good corporate citizen is to involve itself in appropriate initiatives which reflect positively on us. The White Knights program is a brilliant example of this. Another example, which is still in its infancy, is building ties with the indigenous community to increase participation numbers in football. It is apparent that this segment of the community is under represented in football and this program seeks to redress that imbalance. Discussions are underway with Sydney FC as to how this might work in a collaborative fashion.

I continue to represent ESFA at Football NSW and ensure that our best interests are served from our peak body. I remain committed and enthusiastic and look forward to delivering on these exciting initiatives in the next 12 months.

**Michelle Bogatyrov**

Director of Corporate Affairs



## COMPETITION'S MANAGER ANNUAL REPORT 2010

### ASSOCIATION

The 2010 season at ESFA was one of significant change in the Association's history. After careful planning and the initiation of a number of season review meetings at the conclusion of 2009, the new season generated much hope of improvement and development for all football in the Eastern Suburbs. A number of internal governance issues were resolved and existing policy documents updated to improve the nature of operations within the organisation.

While many positives existed throughout the season, one of the hardest periods of transition were faced during the months of July and August when two prominent staff members resigned. The first of these was the Competitions Manager, Taleah Neowhouse who left on the 20th July. Three weeks prior to this date, I was offered the role to move from existing Referees Manager to Acting Competitions Manager to which I have held the position ever since. On the 13th August, General Manager Jeff Saul finished his tenure at the Eastern Suburbs Football Association. He had announced his resignation in previous weeks and commenced a handover of all operations to existing staff members Aaron Dibdin and myself.

To cap off a difficult season with staffing changes, the 2010 season saw a record number of games washed out/forfeited or cancelled due to unplayable conditions. 4288 games were scheduled in the draw for the 2010 season. Only 3575 of these games were actually played meaning a total of 713 games were abandoned due to the aforementioned reasons. This is 17% of scheduled games. Nevertheless, with these alarming statistics we still managed to run a very successful grand final series after managing to catch up all required fixtures. While this was a difficult task we appreciated the patience and support of the clubs in closing out the season to the best of our ability.

Comparing last season to this season, 2009 witnessed a total of 3498 games listed in the draw. Of that figure, only 37 games were abandoned before the weekend. This is a 1% loss. This highlights the clear evidence of the difficulties the weather played in running the 2010 season.

### COMPETITION

The 2010 competition consisted of 374 teams across both junior and senior football. This included players from U6 small sided games right through to Premier League. A total of 7173 players participated in competitions throughout the season. This included 5471

males and 1702 females. Of all players, a total of 4274 students played throughout ESFA. Male students made up 3058 and female students 1216.

For the first time in the Association's history, all seventeen age divisions were represented at the FNSW Champion of Champions tournament. Special mention must go to the Queens Park U16 boys and Redfern O45 men for making their respective Grand Finals played at Valentine Sports Park for the very last time. Unfortunately the teams lost 3-0 and 5-1 respectively but it was a fantastic effort to make the last round on what was an historical occasion for football across the state.

An unprecedented total of 50 grand finals were played by ESFA teams in 2010. A big thank you must be reserved for Randwick City Council for their dedication to assist ESFA in cultivating Heffron Park 4 for the Grand finals. Heffron 53, 54 and 55 were also made available at short notice which were utilised for a number of fixtures. The approval for usage of these grounds was crucial to the successful completion of the 2010 season and we are indebted to Randwick CC for their continuing commitment to football.

### REFEREEING

Season 2010 showed a vast improvement on the coverage of referees for all games. After the Branch had undergone significant restructure at the commencement of the 2009 season, 2010 was always going to be difficult after the 'honeymoon' period of great success. This was nullified however by the fantastic work of the Referees Standing Committee, the Referees Manager Adam Giles and Acting Referees Coordinator Gregory Calacouris in continuing to grow and manage a flourishing Branch. Feedback from clubs at the Season Review meetings was extremely positive, especially from the Women's representatives who have stated that it is a 'marked improvement' from previous years in terms of coverage and quality.

### HIGHLIGHTS

One of the biggest highlights in 2010 was the continual growth and development of relationships with key stakeholders such as Sydney FC. The A-League club is committed to grassroots football and this was evident when I was able to secure a room and corporate box at the inaugural A-League double header between Sydney FC and Brisbane Roar, Central Coast Mariners and Perth Glory. A total of eleven clubs used this great opportunity to mix with Sydney FC staff, learn more about the Junior Blues Program and watch two fantastic games of football. A huge thank you to Stefan Kamasz, Sipko-Hans Adriaansen and Daniel Barrett for

their continued support of ESFA and the growth and development of grassroots football throughout the Eastern Suburbs.

Another huge highlight for ESFA in 2010 was the introduction of a number of charity initiatives. Coogee United instigated a 'Soccer by the Sea' charity day on the 19th April and as Referees Manager at the time I used this opportunity to raise money for the Leukaemia Foundation in support of the day. The Branch raised over \$2500 to support this very worthwhile cause. On July 4th, I organised a weekend to support the National Breast Cancer Foundation. I liaised with Alex Spiroski who provided pink shirts to all referees who decided to donate their entire match fees on the day. A massive thank you to all who donated and gave their time for this very important charity. Special mention to those who donated at the 'Women's Gala Day' on the 12th September and to Mascot Kings who also contributed significantly to the cause. We managed to raise in excess of \$3500 which meant over \$6000 was donated to charity through ESFA and the ESFA Referees Branch in 2010. This is a phenomenal achievement which will hopefully continue to grow in coming years through other various initiatives.

## THE FUTURE

Whilst the 2010 season will be primarily viewed as one of change and transition, the hope is to build continuity and stability over the coming seasons. One point which must be remembered is that our core business operation is to service our member clubs. All stakeholders enjoy having a voice within the organisation and for this very reason it is strongly advised that members nominate for volunteer positions where possible within the Association. Whether this be on the ESFA Board, the Junior, Girl's, Men's and Women's League Councils or any other Committees, these positions allow for club representatives to voice opinions and vote on major issues.

I would personally like to thank Taleah Neowhouse for her efforts in running the ESFA competitions prior to my induction into the role. I would also like to acknowledge Danny Said (Junior Council Chairperson), Frank Friedman (Girls Council Chairperson), Julia Chernoukha (Women's Council Chairperson), Wally Holzer (Men's Council Chairperson) and Peter Kriesler (Director of Football) for their involvement in continuing to develop and progress football throughout the Eastern Suburbs.

### Adam Giles

Acting Competitions Manager





## MEN'S LEAGUE REPORT

The 2010 season has been another hectic one in particular due to the wet weather on some weekends however with perseverance we got through it. I would like to wish big congratulations to all the teams who have won the competition and the grand finals. A special mention to the O/45 competition as Redfern Raiders made it through to the final of the Champions of Champions. The experience of the competition was well received by the club through representing the ESFA. The top four of each competition was not finalised until the last round for the teams who made the semi-finals.

At the beginning of the season, grading teams is an art and we try up most to please everyone but there are some disappointments. Next year we hope to improve the O/35 and O/45 competition as there is a goal at the end of the season to play in the Champions of Champions.

I would like to acknowledge the efforts of the Football Council Chair Persons as meetings were held every two months but if a decision had to be made, an answer was decided within 48 hours. The office staff come and go like backpackers and we hope the next group of staff will stay a bit longer as it causes turmoil in the office.

Big thanks to the Referees Association for trying to cover all the games and it has improved quite considerably from last year and the kids who run the line will benefit the experience.

The game of Football is to be enjoyed by the players, spectators and officials alike and I'm looking forward for this to continue next year and into the future.

**Wally Holzer**

Chair, ESFA Men's League Council



## WOMEN'S LEAGUE REPORT

This year 479 women players were registered with ESFA, down 89 players from 2009. This reduced the All Age to 2 divisions and 1 division for O35s. Despite the drop in numbers in All Age, the competitions ran more smoothly compared to previous years, with feedback from clubs indicating that they were satisfied with the referees more so than previously. The O35s competition was also happy with the referees this year and agreed the competition ran smoothly.

Coogee United joined the Gladesville Hornsby Women's Association competition but still competed in the first women's ESFA Knock Out Cup and also for the right to represent ESFA in the Champions of Champions competition. Coogee won the Knock out Cup final (6-0 over Dunbar) and the right to represent ESFA at Champions of Champions level beating Maroubra (who finished 1st in the 1st grade competition).

Congratulations to the following clubs for winning the league and grand finals:

Age Group	League Champions	Premiers
AAW/AAW1	AAW1 MAROUBRA	AAW1 MAROUBRA
AAW/AAW2	AAW2 COOGEE	AAWB LOKOMOTIV COVE
O35W/1	O35WL QUEENS PARK	O35WL QUEENS PARK

## ISSUES RAISED THROUGH OUT THE YEAR AND MOVING FORWARD

Issues which the women's committee addressed throughout the year were mainly around competition structure and interruptions within competition structure with entrance of new teams late in the stage. There are things to learn every year and moving forward ESFA is hoping letting the extra team/s play in the competition will improve the women's participation numbers next year. Participation numbers are extremely important in building up in the next few years and it is up to clubs (as well as ESFA) so encourage. Also the wet weather did not help things leading up to the Finals. The committee also raised the question whether the Final series should be a 2 or 3 week final series. Participation numbers in the O35s are growing but the main concern was the disparity in levels of players, hence some grading by clubs could be appropriate so create a better competition as well as possibly adding another division into the O35s structure.

**Julia Chernoukha**, ESFA Women's League Chair

## GIRLS LEAGUE COUNCIL REPORT

Season 2010 started with the usual anticipated hope and enthusiasm with all the participating clubs campaigning hard to encourage our local girls to play our great sport.

It seems odd that it has only been the second year that the Girls League Council [GLC] has been up and running as the Girls Only Divisions are well entrenched as a major force in the ESFA district even after only 7 years.

Congratulations must go to ALL the clubs that are participating in this growth area of sport in Australia and hopefully will continue to do so particularly as the 'Matildas' are the current Asian Champions and qualified to play in the Women's World Cup in Germany next year! Although, it must be realized, there are a limited number of players wanting to play football in the district.

But let's keep up the good work.

### THE GLC & THE SMALL SIDED GAMES [SSG]

Girls' football has successfully pioneered the SSG concept in the ESFA district, but now the Juniors have caught us up! The growth of the game is obviously needed to come from these age groups that participate in the SSG programme and although the GLC was not directly involved in the format of the G8 and G9 groups it is important that it keeps a watchful eye on the developments coming from the SSG Council and encourage ALL the clubs to have teams participate in these groups to encourage further development and 'competition'.

The GLC was a driving force to keep the 10 year olds, Girls and Juniors, competitive and with a finals series to end the season.

The concept of playing a semi and the final on the same day was also an initiative from the GLC and proved to be a stunning success, although ALL the teams need to become involved not just the top four.

Next season will see the G10 and G11 play 9v9 on the 60x40 pitch as competitive groups.

To see the excitement and competitiveness of all the Girls teams playing the modified game is beyond expectation and can only increase the development of the players' football participation.

### DIVISION G11 TO G18

There were 68 teams playing in 13 divisions in the ESFA competition. Congratulations to all the teams for their sportsmanship, no red cards and very few incident reports to have to deal with.

The GLC, after the success of the G11 age division last year, extended its divisions this season to

incorporate the G13 division which produced 10 teams combating for one round of 9 games before being 'split' into divisions of 6 and 4 teams. 'Football NSW' do not recognize this as an age division for 'Champion of Champions' and it is debated whether to continue it into the next season at ESFA.

Some of the criticism from last season was that divisions of 6 and 8 teams which include a bye round only play 12 games [as opposed to 15 and 14 respectively]. The GLC attempted to solve this by matching the 2 'bye' teams in the G11 and G14 age group [but different divisions] in a 'friendly' game. Although it can't be said that it was a successful attempt, at least it was trialled, and with a little more flexibility could still be a worthwhile experiment to consider for the future.

Four team divisions are not ideal but needed to be arranged at the time of the split in some of the age divisions just to keep the teams as competitive as possible.

It was the first official year that ESFA had a G18 division and it was less than ideal, but with preseason arrangements folding at the last hurdle, the 4 teams were left in the cold.

A **BIG** thank you to the 4 teams and their coaches for their perseverance and pioneering attitude.

Congratulations to all the League Winners Grand Final Winners and most of all to all the teams that give their best every week.

## HIGHLIGHTS OF THE SEASON

### Champion of Champions

Congratulations to all our participants, most of whom travelled to Kiama as guests of Southern Districts Association. Although the success rate that day was not good, all the teams were competitive and had a great experience on some well maintained pitches.

### Invitational Cup

The ESFA Girls Invitational Cup was introduced this season and proved a great success with teams from Balmain and Earlwood combining with our ESFA teams culminating in the Final being played at the Girls Gala day [see below] between Earlwood and Pagewood/Botany with the latter winning, 2-1 on Golden Goal, in an entertaining game, after trailing 1-0 for most of the game.

### World Cup

Although it was a 'Boys' World Cup in South Africa, some of our G10 Maroubra United and Queens Park teams played on the FIFA FANFEST floating Stage at Darling Harbour; and DID they have a great experience? YES!



### Girls Gala Day

Jo Black and her team of 'Pink Caps' organized a Day to remember for so many of our players, their mothers, friends and some teams from other districts in this day to help spread the word that Girls and Women PLAY football.

A big thank you to the EASTERN UNSW LIONS FOOTBALL CLUB for the venue and support staff as well the sponsors and Milo!

The day saw 60 teams competing in 6-a-side games all over David Phillips UNSW grounds as well as the Girls Youth Invitational Cup, 2 exhibition games, Maroubra United G18 vs Ryde and finishing with Sydney FC Women vs Eastern UNSW Lions.

The Sydney FC players kindly gave out the prizes and a terrific day was had by all!!

### North West Harbour Tournament

Once again it was a privilege to be involved in this acclaimed tournament held over a September weekend at Cromer Park. All our G11 players were invited to participate with 18 girls finally making up the Squad and training whenever the rain allowed!

After the success of last years' troop, ESFA were placed in POOL 'A' against teams mainly made up of players training for next seasons Premier League G12 teams. Coached by Victor from Eastern UNSW Lions the girls responded to the task and combined into a very enthusiastic and spirited team who looked sensational in their ESFA outfits.

The top pool was no problem for our players - into the play off for 1st and 2nd spot they waltzed. The ESFA "SEALS" had the host team's coaches biting their fingers [the nails had gone by half time!] until a well taken late goal allowed Manly United to take the honours.

The players response - a 'victory' dance around the centre circle with the 2 great goalkeepers on the centre spot. A moment to cherish and one to make it all worthwhile!

### 'W' League Launch

ESFA girls were involved, together with their schools, to help launch the 2010/11 W League season at the Village Green on the UNSW campus.

Cameras, Lights and the captains [all Matilda players] of the 'W' League teams were there as the players were put to their tasks in learning more about the game.

### Finally

A big thank you to all the Players, Coaches, Managers, Administrators, Delegates and Supporters of our Girls League Football!

### Frank Friedmann

Chair GLC





## JUNIOR LEAGUE REPORT

This year has been both rewarding and frustrating for both the players and the administrators, luckily the positives far outweighed the negatives (the only negative being the rain). I'd like to thank Aaron for making the registration process as smooth as possible.

I'd also like to give Adam Giles an honorable mention for having to switch from doing a great job with the referees, to becoming Competitions Manager mid season.

Also on behalf of all the grand finalists I'd like to thank Adam, Aaron and Peter Kreslier for organising "the festival of finals" weekend at Heffron and David Phillips.

I was able to watch a lot of junior football through out the year, and it is quite noticeable how the skill levels of our ESFA juniors has grown in leaps and bounds, all parents, coaches and managers should be proud of what they and their players have achieved.

Congratulations to Queens Park U16's for making the final in the NSW Football Champion of Champions.

Whilst it's great to acknowledge Queen's Park success, I would also like to acknowledge all ESFA Juniors who strive to be Champions of fair play.

**Danny Said**  
Junior Chair



## ESFA REFEREES' BRANCH 2010 REVIEW

The 2010 season has again been very successful, following on from our inaugural season of 2009.

The coverage has again been excellent with women's football particularly well covered.

We have a total of 238 members

- 221 active referees
- 78 seniors
- 36 females
- 23 cadets
- 134 new members for 2010

The response that we had from clubs in regards to the evaluation forms was very positive, and something I think we can continue to grow .

We have also had referees marking ARs which has been extremely encouraging.

This data base will be used for future seasons to assist us in improving referees, especially the younger ones.

### COVERAGE

- Total games covered 83%
- Games with 1 AR 29%
- Games with no AR 33%
- Games with 3 officials 30%

Once again a tremendous achievement by all concerned, and a complement from the women's teams on their improved coverage.

### DISCIPLINE

This, on the whole has been very good, with only one coach standing out as an offender, which we were very pleased that the judiciary dealt with him very strongly.

### MOVING FORWARD

After our AGM, we have now an expanding Management Committee comprising of:

Chairman:	Paul Matthews
Deputy Chairman:	Paul Bonomy
Appointments Chair:	George Magoulis
Football NSW Delegate:	Wayne Hillier
Technical Chair:	Ned Sparkes
Branch Coach:	Alex Spiroski

George will be speaking to David Homer to assist him with appointments next season.

We will be looking to have more practical training next season under the capable hands of Alex. And also Ted Simmons will again be involved with inspections and helping with training.

### INSPECTORS

We have already had 12 referees interested in doing an inspectors course in the new year, which is very encouraging, as it is harder to get them than actual referees.

### COURSES

We have just completed another course with 22 successful candidates.

We will be looking to hit the Universities next year as we believe that there is a lot of potential refs there and will be looking to use their open days to maybe utilise the stalls that the football teams have there to look for possible recruits.

### DEVELOPMENT OF REFEREES

I have been extremely pleased to unearth a few young referees with hopefully a big future ahead of them. I have used 3 quite regularly in the Premier league last season and been very pleased with their attitude and willingness to learn and get to a higher level. In fact Brendan Koehler has expressed an interest to getting on to the NSW Federation next season which I am more than happy to help him with. Even though that means we will not have him every weekend next season, I think the more of these young referees that we can push through, the better standard our league will become. I will continue to actively encourage all young referees to push for higher standards which I do not think has been the case in previous years as I believe this will increase the volume of referees when they can see the a good career path in front of them.

Finally I would like to thank, firstly Adam Giles for the way that he went about his job with boundless enthusiasm, and then Greg Calacouris for stepping in at such notice and continuing the good work.

I am sure with the backing of the board and the growing Management Committee we will continue to go from strength to strength.

Regards

**Paul Matthews**  
Proud Chairman ESFARB

## ESFA REFEREES' BRANCH ANNUAL REPORTS 2010

### ASSOCIATION

The 2010 season commenced as one of great opportunity for growth and development for the Eastern Suburbs Referees Branch. After the new ESFA Referees taskforce was introduced at the beginning of 2009, the following year was always going to be one of challenges overcoming the 'honeymoon' period from the initial integration of Referees Branch and Football Association. Season 2010 surpassed all expectations, limiting any possibility of a drop in coverage or loss of competent referees. Recruitment drives were frequent and a number of new referees joined the Branch. New initiatives such as the 'referee club evaluation' forms were introduced to gauge the performance of referees on a weekly basis. Forms were also introduced to gauge performance of referees based on the opinions of their peers. Referees were asked to rate their Assistant Referees on a scale of 1-10 based on their performance during the games. Assistant referees were also required to do the same for the 'centre' referee. While this was a voluntary obligation it was embraced with great enthusiasm and added to the overall improvement of quality right across the Branch. Training was also introduced this season with a few sessions of coaching by Alex Spiroski although this ceased to continue once grounds become difficult to secure. I also introduced 'fitness boxing' as a weekly initiative for participating referees. It is my great hope that training can be run weekly or fortnightly in 2011.

### IMPROVING RELATIONSHIPS

2010 will be forever earmarked as the defining season of improved relations between the Eastern Suburbs Referees Association and the Eastern Suburbs Football Association Referees Branch. Significant work in undertaking talks and scheduling meetings to assist this process were markedly evident. At the time of writing this report after undertaking the ESFA Referees Annual General Meeting, all former referees who wish to return to the Branch have done so. Attendance of a large cross-section of members at the AGM was a true reflection of the involvement of new recruits and more 'seasoned' veterans. This signifies great opportunity for the Branch to prosper significantly over the coming years.

### STATISTICS

I will leave the 2010 season statistical analysis to the current Referees Coordinator, however it must be said that 2010 was a significant improvement from the previous year. A number of new courses were conducted to improve the pool of consistently active referees and this boosted coverage rates. Strategies were also implemented to retain current referees.

### HIGHLIGHTS

One of the biggest highlights in 2010 was the attendance of Sydney FC marquee player, Nicky Carle at the ESFA Referees Presentation of Awards on 25th September. This is where awards were presented for Best Senior, Junior and Female 'Referees of the Year'. The Branch would like to thank Sydney FC for allowing Nicky to take time out of his busy schedule to attend.

Another significant highlight in 2010 was the ability for the Branch to 'lock in' a venue for Branch meetings, Committee meetings, the AGM etc. at the Coogee Diggers club. Former ESFA General Manager Jeff Saul and I met on numerous occasions with Coogee Diggers CEO Phil Vannan to secure a venue free of charge for the entire season. We thank the club for their ongoing relationship with the Branch which has also led to the Association running a number of ESFA club and committee meetings at the same venue.

### REFLECTION

I would personally like to thank the Referees Standing Committee for their commitment and continual pursuit of excellence amongst the refereeing ranks in the Eastern Suburbs. I have now officially resigned from the role of ESFA Referee's Manager and can honestly say the Branch is in a fantastic position to keep pushing towards our ultimate goal of 100% coverage of ESFA fixtures. My biggest thanks must go to Paul Matthews, George Magoulas, Louise Mazzaroli and Branch Coach Alex Spiroski for their efforts over the past two seasons. I also thank those members who joined the committee in 2010. Special mention must be reserved for former RSC Chairman, David Lewis and former ESFA General Manager Jeff Saul for their vision and commitment to building and developing such a successful Branch. Lastly to Gregory Calacouris for his dedication and perseverance to learn and understand the various processes required to deliver an effective service to our members. I sincerely hope Greg can remain within the Branch in some capacity in 2011 as he continues with his university studies.

**Adam Giles**

Former Referees Manager



## ACTING REFEREES COORDINATOR ANNUAL REPORT

The focus of the 2010 season was one of continual progression for the Referees Branch. Following a successful first year, in 2009, the Branch faced expected growing pains. There was a return of 104 referees from last year and a 62% increase of new members to the branch. The steady growth has nonetheless been the sentiment to the work involved between the first two seasons.

This season saw the Referees Branch grow to 238 members:

- 221 were active referees
- 78 Referees were over 18
- 36 Female Referees
- 23 Cadets
- 134 new members in 2010
- 12 new members were referees in the Eastern Suburbs prior to 2009
- Steady growth of membership base within the Branch

All ESFA clubs were asked to complete referee evaluation forms during the season, which was met with great reception. Teams not only responded copiously, but with encouraging evaluation of both our returning and new referees.

With Adam Giles moving to the role of Competitions Manager in July, I took up the role of Referee Manager, on a part time basis, for the remainder of the season. Despite having huge shoes to fill it has been a wonderful opportunity to continue the operation and development of the Branch.

I would firstly like to thank Adam, for all the work he put into the Branch during his time as Referee Manager over these last two seasons and for all his faith of me during this transitional phase. We have been very auspicious to have such a dedicated individual driving the growth of this Branch and it has been wonderful to see that Adam has still retained interest in the development of the Branch.

I secondly thank the ESFA staff, both past and present, for their confidence in me and their consistent belief in the evolution of the Referees Branch during this period of progression.

I also contently show my gratitude to the Referees Standing Committee. They have been very supportive of me and have been eager to expand the Branch to great extent. Their commitment to establishing this Branch over the past two seasons is nothing short of commendable and I both congratulate and thank them for their achievement.



### ESFA Referees Involved in Grand Finals:

#### PL Grand Final -

#### Phoenix V Dunbar Rovers - 4th September

- Referee: Ned Sparkes
- Assistant: Gabriel Olshansky
- Assistant: Robert Sypher
- 4th Official: Matthew Croucher

#### U14 Boys Champion of Champions Grand Final - Burwood V North Sydney Bears - 24th October

- Referee: Syafiq Johari
- Assistant: Jack Bell
- Assistant: Ben Hillier

#### Special Awards for Season 2010

- Best Senior Referee: John Galouzis
- Best Junior Referee: Jack Bell
- Best Female Referee: Samantha Ferguson
- ESFA Referees Branch Inaugural Referee Manager: Adam Giles

#### Gregory Calacouris

Acting Referees Coordinator

## ESFA METRO TEAMS

The Metropolitan Representative League is conducted by FNSW and is a representative competition for football associations across the Sydney region, plus the Illawarra and Southern Districts. The Metro League is only for under 11 and 12 age groups and there is just one division. Boys who live in the eastern suburbs can only play for their local Association and that is ESFA.

In 2010 ESFA's Metro teams were overseen by a Standing Committee of the Board made up of Rick Flowers, George Phillips and Andrew Field.

George Phillips took on the voluntary role of Metro Convenor. With support from ESFA staff, the Metro Convenor co-ordinated ground bookings, acquiring kit and equipment, trials for selection of players, trophies, end-of-season award event, and regular correspondence with team coaches and managers. The ESFA Board is grateful for the professionalism and commitment George demonstrated in this role.

The ESFA metro teams were fortunate to have secured the services of Simon Preston as the team coach for under 12's, Brennan Sharpley as Assistant Coach for the 12's, and Ross O'Sullivan as team coach for the 11's. These Coaches have been extensively involved in the development of junior football in the eastern suburbs for many years through various clubs, schools and associations. The knowledge, skill and commitment of our Metro coaches as well as their enthusiasm and energy produced good results and had a positive impact on each of the boys.

The time and effort invested by our voluntary team managers - Michael Swibel for the 11's and Joseph Hayek for the 12's - also deserves recognition and gratitude from the ESFA Board.

We are proud of the 12's finishing the season more or less in the middle of the ladder, and of the 11's for winning the grand final!

### **Rick Flowers**

Chair of the Metro League Committee



## EUNSW LIONS REPORT

In 2010 the University of New South Wales Football Club (UNSWFC) and the Eastern Suburbs Football Association (ESFA) joined forces to enter the Football NSW Women's Super League (WSL) competition.

The joint venture known as the Eastern UNSW Lions aimed to bring elite female football back to the Eastern Suburbs by combining the players base of ESFA and the coaching and management experience from UNSWFC.

The Football NSW Women's Super League competition consists of five divisions, under-12s, under-14s, under-16s, reserve and first grade, with the reserve and first grade teams made up from over age players.

The 2010 debut season was very successful, with all teams being competitive and Reserve grade winning both the premiership and championship.

The Coaching team consists of 4 coaches and 4 assistant coaches overseen by Luke Andrews, the Coaching Technical Director, with each team managed by a volunteer parent.

The Club also established a Management Committee with an independent chair, 2 nominees from UNSW, and 2 from ESFA.

The Management Committee's key roles are to oversee high level operation, management and administration of the Club. It is to be the last level of dispute resolution and/or mediation for club members and also has a role to review the Club's quarterly financial reports as well as other management and operational issues arising during the season.

It remains a fundamental goal of the Eastern UNSW Lions to create a pathway for representative girl's and women's football in the Eastern Suburbs by providing footballing opportunities at both elite and community levels, and the Club aims to continue to work hard towards that goal.

## 2010 LEAGUE AND PREMIER WINNERS - BOYS

AGE GROUP	LEAGUE CHAMPIONS	PREMIERS
10/1	10A MAROUBRA	10A MAROUBRA
10/2	10B MAROUBRA	10B QUEENS PARK
10/3	10A OLYMPIC EAGLES	10B COOGEE UNITED
10/4	10D (P) EASTS	10D (P) EASTS
10/5	10C COOGEE	10C COOGEE
11/1	11A BONDI UNITED	11A EASTS
11/2	11A MASCOT KINGS	11A MASCOT KINGS
11/3	11B COOGEE	11B COOGEE
12/1	12A QUEENS PARK	12A QUEENS PARK
12/2	12B QUEENS PARK	12B PAGEWOOD
12/3	12S MACCABI	12S MACCABI
13/1	13A QUEENS PARK	13A QUEENS PARK
13/2	13A HEFFRON HAWKS	13B QUEENS PARK
14/1	14G MAROUBRA	14A QUEENS PARK
14/2	14A PAGEWOOD	14A PAGEWOOD
15/1	15A (P) EASTS	15A (P) EASTS
16/1	16A QUEENS PARK	16A HEFFRON HAWKS
16/2	16B MAROUBRA	16B EASTS
18/1	18A MACCABI	18A MAROUBRA

## LEAGUE TABLES

### BOYS UNDER 10 DIVISION 1

TEAM	P	W	L	D	F	A	GD	Pts	Adj	Pt
10A QUEENS PARK	14	9	2	1	27	13	14	0		<b>28</b>
10A MAROUBRA UNITED	14	8	2	2	37	17	20	0		<b>26</b>
10A (P) EASTS	14	8	3	1	32	17	15	0		<b>25</b>
10A BONDI UNITED FC	14	7	5	0	29	18	11	0		<b>21</b>
10A PAGEWOOD	14	4	7	1	21	32	-11	0		<b>13</b>
10A MACCABI	14	2	10	0	15	37	-22	0		<b>6</b>
10 YELLOW MASCOT KINGS	14	1	10	1	19	46	-27	0		<b>4</b>

### BOYS UNDER 10 DIVISION 2

TEAM	P	W	L	D	F	A	GD	Pts	Adj	Pt
10A COOGEE UNITED	14	12	0	2	44	6	38	0		<b>38</b>
10B PAGEWOOD	14	8	5	1	41	25	16	0		<b>25</b>
10Y MAROUBRA UNITED	14	7	4	3	30	13	17	0		<b>24</b>
10B QUEENS PARK	14	6	5	3	31	25	6	0		<b>21</b>
10B EASTS	14	6	5	3	30	26	4	0		<b>21</b>
10B MACCABI	14	4	4	6	16	16	0	0		<b>18</b>
10G MAROUBRA UNITED	14	3	9	2	15	41	-26	0		<b>11</b>
10A REDDAM HOUSE	14	0	14	0	11	66	-55	0		<b>0</b>

### BOYS UNDER 10 DIVISION 3

TEAM	P	W	L	D	F	A	GD	Pts	Adj	Pt
10A OLYMPIC EAGLES FC	14	9	0	3	45	14	31	0		<b>30</b>
10C QUEENS PARK	14	7	3	2	30	15	15	0		<b>23</b>
10B COOGEE UNITED	13	7	4	1	33	22	11	0		<b>22</b>
10C PAGEWOOD	14	7	5	0	35	20	15	0		<b>21</b>
10D QUEENS PARK	14	6	5	1	28	28	0	0		<b>19</b>
10C EASTS	13	2	10	0	12	33	-21	0		<b>6</b>
10 ORANGE MASCOT KINGS	13	0	11	1	15	66	-51	0		<b>1</b>

### BOYS UNDER 10 DIVISION 4

TEAM	P	W	L	D	F	A	GD	Pts	Adj	Pt
10D (P) EASTS	14	13	0	1	71	7	64	0		<b>40</b>
10D PAGEWOOD	14	12	1	1	68	17	51	0		<b>37</b>
10S1 (S) MACCABI	14	7	6	1	46	22	24	0		<b>22</b>
10E EASTS FC	13	6	5	2	31	31	0	0		<b>20</b>
10E QUEENS PARK FC	14	6	7	1	33	53	-20	0		<b>19</b>
10C MACCABI	13	1	8	4	18	39	-21	0		<b>7</b>
10D MAROUBRA UNITED	14	1	10	3	11	47	-36	0		<b>6</b>
10E MAROUBRA UNITED	13	0	12	1	7	69	-62	0		<b>1</b>

**BOYS UNDER 10 DIVISION 5**

TEAM	P	W	L	D	F	A	GD	Pts	Adj	Pt
10C COOGEE UNITED	14	13	0	1	69	7	62	0		<b>40</b>
10S2 (S) MACCABI	14	10	2	2	71	27	44	0		<b>32</b>
10F QUEENS PARK FC	14	9	4	0	56	28	28	0		<b>27</b>
10F EASTS FC	14	6	6	2	23	34	-11	0		<b>20</b>
10D MACCABI	14	4	9	1	20	38	-18	0		<b>13</b>
10E PAGEWOOD	14	2	9	2	19	43	-24	0		<b>8</b>
10 BLUE MASCOT KINGS	14	2	11	1	14	54	-40	0		<b>7</b>
10F MAROUBRA UNITED	14	2	10	1	15	56	-41	0		<b>7</b>

**BOYS UNDER 11 DIVISION 1**

TEAM	P	W	L	D	F	A	GD	Pts	Adj	Pt
11A BONDI UNITED FC	15	12	1	2	55	9	46	0		<b>38</b>
11A EASTS	15	9	2	4	35	12	23	0		<b>31</b>
11A COOGEE UNITED	15	7	3	5	21	16	5	0		<b>26</b>
11A QUEENS PARK	15	3	9	3	19	32	-13	0		<b>12</b>
11A MAROUBRA UNITED	15	2	10	3	9	33	-24	0		<b>9</b>
11A PAGEWOOD	15	2	10	3	14	51	-37	0		<b>9</b>

**BOYS UNDER 11 DIVISION 2**

TEAM	P	W	L	D	F	A	GD	Pts	Adj	Pt
11A MASCOT KINGS	14	12	1	1	43	10	33	0		<b>37</b>
11B EASTS	14	11	2	1	32	15	17	0		<b>34</b>
11D QUEENS PARK	10	4	3	3	21	13	8	7		<b>22</b>
11B QUEENS PARK	14	7	6	1	22	27	-5	0		<b>22</b>
11S MACCABI	14	3	11	0	28	42	-14	0		<b>9</b>
11B PAGEWOOD	14	0	14	0	3	42	-39	0		<b>0</b>

**BOYS UNDER 11 DIVISION 3**

TEAM	P	W	L	D	F	A	GD	Pts	Adj	Pt
11B COOGEE UNITED	14	12	0	2	68	15	53	0		<b>38</b>
11C PAGEWOOD	14	6	2	6	24	17	7	0		<b>24</b>
11B MAROUBRA UNITED	10	4	4	2	13	13	0	7		<b>21</b>
11C QUEENS PARK	14	5	5	4	26	33	-7	0		<b>19</b>
11B MASCOT KINGS	14	5	8	1	21	23	-2	0		<b>16</b>
11C EASTS	14	0	13	1	6	57	-51	0		<b>1</b>

**BOYS UNDER 12 DIVISION 1**

TEAM	P	W	L	D	F	A	GD	Pts	Adj	Pt
12A QUEENS PARK	15	14	1	0	66	3	63	3		<b>42</b>
12A PAGEWOOD	15	11	2	2	40	10	30	3		<b>35</b>
12A EASTS	15	8	6	1	24	27	-3	3		<b>25</b>
12A MAROUBRA UNITED	15	3	9	3	15	43	-28	3		<b>12</b>
12B EASTS	15	3	11	1	12	40	-28	0		<b>10</b>
12A MACCABI	15	2	12	1	9	43	-34	3		<b>7</b>

### BOYS UNDER 12 DIVISION 2

TEAM	P	W	L	D	F	A	GD	Pts	Adj	Pt
12B QUEENS PARK	15	15	0	0	41	1	40	15		<b>45</b>
12B PAGEWOOD	15	9	5	1	28	23	5	3		<b>28</b>
12C PAGEWOOD BOTANY FC	15	6	5	4	22	16	6	0		<b>22</b>
12D EASTS FC	15	5	5	5	13	14	-1	5		<b>20</b>
12A MASCOT KINGS	15	5	9	1	23	33	-10	3		<b>16</b>
12B MAROUBRA UNITED	15	1	13	1	12	44	-32	0		<b>1</b>

### BOYS UNDER 12 DIVISION 3

TEAM	P	W	L	D	F	A	GD	Pts	Adj	Pt
12S MACCABI	15	11	2	2	50	14	36	0		<b>35</b>
12C QUEENS PARK	15	10	3	2	36	18	18	0		<b>32</b>
12D PAGEWOOD BOTANY FC	14	7	5	2	37	26	11	0		<b>23</b>
12A OLYMPIC EAGLES FC	14	6	5	3	28	20	8	0		<b>21</b>
12C EASTS FC	12	2	9	1	15	27	-12	0		<b>7</b>
12A REDDAM HOUSE	14	1	13	0	2	63	-61	0		<b>3</b>

### BOYS UNDER 13 DIVISION 1

TEAM	P	W	L	D	F	A	GD	Pts	Adj	Pt
13A QUEENS PARK	15	14	0	1	107	4	103	0		<b>43</b>
13A MACCABI	15	11	2	2	84	23	61	0		<b>35</b>
13A MAROUBRA UNITED	15	9	5	1	69	22	47	0		<b>28</b>
13A PAGEWOOD	15	5	9	1	23	62	-39	0		<b>16</b>
13A MASCOT KINGS	15	3	11	1	18	94	-76	0		<b>10</b>
13B MAROUBRA UNITED	15	0	15	0	7	103	-96	0		<b>0</b>

### BOYS UNDER 13 DIVISION 2

TEAM	P	W	L	D	F	A	GD	Pts	Adj	Pt
13A HEFFRON HAWKS	13	10	1	1	48	7	41	0		<b>31</b>
13B QUEENS PARK	14	8	3	1	49	15	34	0		<b>25</b>
13B MASCOT KINGS	14	8	3	1	41	13	28	0		<b>25</b>
13A (P) EASTS	14	8	3	1	40	19	21	0		<b>25</b>
13B MACCABI	14	3	8	1	21	30	-9	0		<b>10</b>
13C MAROUBRA UNITED	14	2	10	0	5	57	-52	0		<b>6</b>
13S MACCABI	14	0	11	1	7	70	-63	0		<b>1</b>

### BOYS UNDER 14 DIVISION 1

TEAM	P	W	L	D	F	A	GD	Pts	Adj	Pt
14G MAROUBRA UNITED	14	12	1	1	41	9	32	0		<b>37</b>
14S MACCABI	14	9	4	1	35	22	13	0		<b>28</b>
14A (P) EASTS	14	5	7	2	24	26	-2	0		<b>17</b>
14A QUEENS PARK	14	5	8	1	15	21	-6	0		<b>16</b>
14Y MAROUBRA UNITED	14	4	7	3	17	17	0	0		<b>15</b>
14A MASCOT KINGS	15	6	9	0	8	45	-37	6		<b>9</b>



**BOYS UNDER 14 DIVISION 2**

TEAM	P	W	L	D	F	A	GD	Pts	Adj	Pt
14A PAGEWOOD	15	11	1	1	25	5	20	6		<b>25</b>
14B (P) EASTS FC	14	6	3	2	25	14	11	0		<b>20</b>
14B PAGEWOOD BOTANY FC	14	6	4	1	19	13	6	0		<b>19</b>
14C MAROUBRA UNITED	14	2	5	4	15	26	-11	0		<b>10</b>
14B QUEENS PARK FC	14	2	9	0	12	38	-26	0		<b>6</b>

**BOYS UNDER 15 DIVISION 1**

TEAM	P	W	L	D	F	A	GD	Pts	Adj	Pt
15A (P) EASTS FC A	15	9	3	0	24	10	14	0		<b>27</b>
15A QUEENS PARK FC	15	6	3	3	20	14	6	0		<b>21</b>
15A MAROUBRA UNITED	15	5	3	4	19	13	6	0		<b>19</b>
15A PAGEWOOD	15	5	4	3	23	25	-2	0		<b>18</b>
15A MACCABI	15	0	12	0	10	34	-24	0		<b>0</b>

**BOYS UNDER 16 DIVISION 1**

TEAM	P	W	L	D	F	A	GD	Pts	Adj	Pt
16A QUEENS PARK FC	15	10	0	2	49	6	43	0		<b>32</b>
16A HEFFRON HAWKS	15	8	2	2	36	15	21	0		<b>26</b>
16A EASTS	15	5	6	1	17	24	-7	0		<b>16</b>
16A MAROUBRA UNITED	15	3	6	3	21	21	0	0		<b>12</b>
16A MACCABI JUNIOR SC	15	0	12	0	4	61	-57	0		<b>0</b>

**BOYS UNDER 16 DIVISION 2**

TEAM	P	W	L	D	F	A	GD	Pts	Adj	Pt
16B MAROUBRA UNITED	16	8	1	3	29	9	20	0		<b>27</b>
15A MASCOT KINGS	16	6	5	1	30	33	-3	0		<b>19</b>
16B EASTS FC	15	5	4	3	36	22	14	0		<b>18</b>
15S MACCABI JUNIOR SC	16	5	5	2	28	32	-4	0		<b>17</b>
16C MAROUBRA UNITED	16	0	9	3	12	39	-27	0		<b>3</b>

**BOYS UNDER 18 DIVISION 1**

TEAM	P	W	L	D	F	A	GD	Pts	Adj	Pt
18A MACCABI	14	13	0	1	104	14	90	0		<b>40</b>
18A MAROUBRA UNITED	14	11	3	0	83	21	62	0		<b>33</b>
18A HEFFRON HAWKS	14	8	5	1	42	23	19	0		<b>25</b>
18C MASCOT KINGS	14	7	6	1	42	26	16	0		<b>22</b>
18A MASCOT KINGS	14	7	7	0	41	31	10	0		<b>21</b>
18A PAGEWOOD	14	3	9	2	37	85	-48	0		<b>11</b>
18B MASCOT KINGS	14	3	11	0	28	73	-45	0		<b>9</b>
18B MACCABI JUNIOR SC	14	1	12	1	20	124	-104	0		<b>4</b>

## 2010 LEAGUE AND PREMIER WINNERS - GIRLS

AGE GROUP	LEAGUE CHAMPIONS	PREMIERS
G10/1	G10A PAGEWOOD	G10 BLUE EASTS
G10/2	G10 COOGEE	G10 COOGEE
G11/1	G11A MACCABI JUNIOR	G11P QUEENS PARK
G11/2	G11C PAGEWOOD	G11B EASTS
G12/1	G12A EASTS	G12A EASTS
G12/2	G12B PAGEWOOD	G12B EASTS
G13/1	G13R QUEENS PARK	G13R QUEENS PARK
G13/2	G13 OLYMPIC EAGLES	G13 OLYMPIC EAGLES
G14/1	G14A MACCABI	G14A MACCABI
G14/2	G14A PAGEWOOD	G14T MAROUBRA
G16/1	G16A PAGEWOOD	G16A PAGEWOOD
G16/2	G16B PAGEWOOD	G16B PAGEWOOD
G18/1	G18M MAROUBRA	G18M MAROUBRA

**GIRLS UNDER 10 DIVISION 1**

TEAM	P	W	L	D	F	A	GD	Pts	Adj	Pt
G10A PAGEWOOD	15	12	1	2	67	11	56	3		<b>38</b>
G10 BLUE EASTS	15	10	4	1	21	15	6	8		<b>24</b>
G10B QUEENS PARK FC	15	7	6	2	22	26	-4	3		<b>23</b>
G10G MAROUBRA UNITED	15	6	7	2	26	30	-4	3		<b>20</b>
G10A QUEENS PARK FC	15	5	6	4	18	19	-1	1		<b>19</b>
G10A MACCABI	15	3	10	2	26	59	-33	3		<b>11</b>

**GIRLS UNDER 10 DIVISION 2**

TEAM	P	W	L	D	F	A	GD	Pts	Adj	Pt
G10 COOGEE UNITED	15	12	1	2	51	10	41	0		<b>38</b>
G10Y MAROUBRA UNITED	15	7	5	3	45	9	36	6		<b>30</b>
G10C QUEENS PARK	15	7	6	2	38	24	14	0		<b>23</b>
G10D QUEENS PARK	15	4	8	3	41	26	15	0		<b>15</b>
G10B PAGEWOOD BOTANY FC	15	4	9	2	25	56	-31	0		<b>14</b>
G10B MACCABI	15	0	15	0	3	111	-108	0		<b>0</b>

**GIRLS UNDER 11 DIVISION 1**

TEAM	P	W	L	D	F	A	GD	Pts	Adj	Pt
G11A MACCABI JUNIOR SC	15	8	3	1	27	14	13	9		<b>34</b>
G11D QUEENS PARK FC	15	6	2	4	15	6	9	6		<b>28</b>
G11A EASTS FC	15	6	6	0	18	16	2	6		<b>24</b>
G11P QUEENS PARK FC	15	3	4	5	15	15	0	6		<b>20</b>
G11 MAROUBRA UNITED	15	1	9	2	15	39	-24	6		<b>11</b>

**GIRLS UNDER 11 DIVISION 2**

TEAM	P	W	L	D	F	A	GD	Pts	Adj	Pt
G11C PAGEWOOD BOTANY FC	15	8	2	2	40	9	31	6		<b>32</b>
G11K QUEENS PARK FC	15	8	4	0	31	16	15	6		<b>30</b>
G11B EASTS FC	15	6	4	2	32	18	14	6		<b>26</b>
G11W QUEENS PARK FC	15	5	5	2	31	17	14	6		<b>23</b>
G11B MACCABI JUNIOR SC	15	0	12	0	0	74	-74	9		<b>9</b>

**GIRLS UNDER 12 DIVISION 1**

TEAM	P	W	L	D	F	A	GD	Pts	Adj	Pt
G12A EASTS	14	13	1	0	46	2	44	0		<b>39</b>
G12A QUEENS PARK	15	11	2	2	47	6	41	0		<b>35</b>
G12A MACCABI	14	8	3	3	40	10	30	0		<b>27</b>
G12A PAGEWOOD BOTANY FC	15	6	8	1	22	22	0	0		<b>19</b>
G12B QUEENS PARK	15	1	12	2	3	60	-57	0		<b>5</b>
G12 MAROUBRA UNITED	15	0	13	2	3	61	-58	0		<b>2</b>

**GIRLS UNDER 12 DIVISION 2**

TEAM	P	W	L	D	F	A	GD	Pts	Adj	Pt
G12B PAGEWOOD BOTANY FC	15	13	1	1	46	6	40	0		<b>40</b>
G12 COOGEE UNITED	15	12	3	0	44	12	32	0		<b>36</b>
G12B EASTS B	15	8	5	2	30	14	16	0		<b>26</b>
G12 OLYMPIC EAGLES FC	15	6	7	2	22	15	7	0		<b>20</b>
G12B MACCABI	15	1	12	2	6	50	-44	0		<b>5</b>
G12C PAGEWOOD BOTANY FC	15	1	13	1	6	57	-51	0		<b>4</b>

### GIRLS UNDER 13 DIVISION 1

TEAM	P	W	L	D	F	A	GD	Pts	Adj	Pt
G13R QUEENS PARK	14	14	0	0	68	2	66	0		42
G13A MACCABI JUNIOR SC	14	10	2	2	33	7	26	0		32
G13A EASTS FC	14	10	3	1	61	9	52	0		31
G13B EASTS FC	14	8	5	1	25	25	0	0		25
G13 MAROUBRA UNITED	14	5	9	0	11	26	-15	0		15
G13B QUEENS PARK	14	4	9	1	18	23	-5	0		13

### GIRLS UNDER 13 DIVISION 2

TEAM	P	W	L	D	F	A	GD	Pts	Adj	Pt
G13 OLYMPIC EAGLES FC	15	4	6	5	15	24	-9	0		17
G13P QUEENS PARK FC	15	4	6	5	15	41	-26	0		17
G13 PAGEWOOD BOTANY FC	15	2	10	3	13	59	-46	0		9
G13B MACCABI JUNIOR SC	15	2	13	0	7	50	-43	0		6

### GIRLS UNDER 14 DIVISION 1

TEAM	P	W	L	D	F	A	GD	Pts	Adj	Pt
G14A MACCABI A	15	13	0	1	49	2	47	3		40
G14A EASTS FC	14	6	4	4	30	15	15	3		22
G14G MAROUBRA UNITED	15	6	7	2	26	26	0	3		20
G14B MACCABI B	15	1	11	3	5	58	-53	5		6

### GIRLS UNDER 14 DIVISION 2

TEAM	P	W	L	D	F	A	GD	Pts	Adj	Pt
G14A PAGEWOOD	14	10	2	2	37	8	29	0		32
G14T MAROUBRA UNITED	14	10	3	0	31	20	11	0		30
G14B EASTS FC	14	8	4	1	28	12	16	0		25
G14A QUEENS PARK	13	5	6	2	15	15	0	0		17
G14 COOGEE UNITED	14	3	10	1	21	27	-6	0		10
G14C MACCABI	14	0	13	0	2	52	-50	0		0

### GIRLS UNDER 16 DIVISION 1

TEAM	P	W	L	D	F	A	GD	Pts	Adj	Pt
G16A PAGEWOOD BOTANY FC	14	13	0	1	90	11	79	0		40
G16A MACCABI	14	12	1	1	97	7	90	0		37
G16 SHARKS MAROUBRA UNITED	14	9	5	0	49	38	11	0		27
G16L QUEENS PARK	14	8	6	0	55	30	25	0		24
G16R QUEENS PARK	14	6	8	0	41	37	4	0		18
G16R REDDAM HOUSE	14	5	9	0	40	40	0	0		15

### GIRLS UNDER 16 DIVISION 2

TEAM	P	W	L	D	F	A	GD	Pts	Adj	Pt
G16B PAGEWOOD BOTANY FC	15	9	6	0	33	32	1	0		27
G16C MACCABI JUNIOR SC	15	6	9	0	48	57	-9	0		18
G16 COOGEE UNITED	13	1	12	0	7	73	-66	0		3
G16B MACCABI B	13	0	13	0	3	138	-135	0		0

### GIRLS UNDER 18 DIVISION 1

TEAM	P	W	L	D	F	A	GD	Pts	Adj	Pt
G18MAROUBRA MAROUBRA UNITED	12	9	1	2	68	3	65	0		29
G18SHARKS MAROUBRA UNITED	12	9	1	2	38	5	33	0		29
G18 QUEENS PARK FC	12	2	10	0	14	63	-49	0		6
G18 REDDAM HOUSE	12	2	10	0	10	59	-49	0		6

## 2010 LEAGUE AND PREMIER WINNERS - WOMEN

AGE GROUP	LEAGUE CHAMPIONS	PREMIERS
AAW/AAW1	AAW1 MAROUBRA	AAW1 MAROUBRA
AAW/AAW2	AAW2 COOGEE	AAWB LOKOMOTIV COVE
O35W/1	O35WL QUEENS PARK	O35WL QUEENS PARK

### ALL AGE WOMEN 1

TEAM	P	W	L	D	F	A	GD	Pts	Adj	Pt
AAW1 MAROUBRA UNITED	16	14	1	0	67	13	54	0		42
AAW1 - NW COOGEE UNITED	0	0	0	0	0	0	0	0		0
AAW1A DUNBAR ROVERS	16	12	2	1	64	14	50	0		37
AAW1L QUEENS PARK FC	15	10	4	0	53	13	40	0		30
AAW1 WAVERLEY OLD BOYS	15	9	5	0	47	14	33	0		27
AAW1 GLEBE WANDERERS	16	6	6	3	30	36	-6	0		21
AAW1 PAGEWOOD	16	3	11	1	14	47	-33	0		10
AAW1R QUEENS PARK	16	1	10	4	13	61	-48	0		7
AAW1 UNSW FOOTBALL	16	1	12	2	12	66	-54	0		5
AAW1B PAGEWOOD BOTANY FC	9	1	6	1	5	41	-36	0		4

### ALL AGE WOMEN 1

TEAM	P	W	L	D	F	A	GD	Pts	Adj	Pt
AAW2 COOGEE UNITED	18	14	2	2	60	15	45	0		44
AAWB LOKOMOTIVCOVE FC	18	11	4	3	42	33	9	0		36
AAW MACCABI SENIORS	18	10	3	5	68	18	50	0		35
AAW HEFFRON HAWKS	18	7	4	7	30	17	13	0		28
AAW2 MAROUBRA UNITED	18	6	6	6	30	23	7	0		24
AAW MASCOT KINGS	18	7	9	2	30	33	-3	0		23
AAW2 WAVERLEY OLD BOYS	18	7	9	2	27	37	-10	0		23
AAW2 DUNBAR ROVERS	18	6	8	4	16	28	-12	0		22
AAWO LOKOMOTIVCOVE FC	18	4	11	3	13	29	-16	0		15
AAW2 QUEENS PARK	18	1	17	0	7	90	-83	0		3

### OVER 35 WOMEN 1

TEAM	P	W	L	D	F	A	GD	Pts	Adj	Pt
O35WL QUEENS PARK Lions	14	11	1	0	50	5	45	0		33
O35WR QUEENS PARK Rangers	14	8	3	1	29	11	18	0		25
O35W OLYMPIC EAGLES FC	14	6	3	3	28	15	13	0		21
O35WB MAROUBRA UNITED	14	6	4	2	30	13	17	0		20
O35W GLEBE WANDERERS	14	4	5	3	18	23	-5	0		15
O35WA MAROUBRA UNITED	14	1	10	1	6	64	-58	0		4
O35W MACCABI HAKOAH	14	1	11	0	7	37	-30	0		3

## 2010 LEAGUE AND PREMIER WINNERS - MENS

AGE GROUP	LEAGUE CHAMPIONS	PREMIERS
PL	PL PHOENIX	PL PHOENIX
PLR	PLR DUNBAR ROVERS	PLR WAVERLEY OLD BOYS
AA1	AA1 BARNSTONEWORTH	AA1 LOKOMOTIV COVE
AA2	AA2 DUNBAR ROVERS	AA2 DUNBAR ROVERS
AA3	AA3 REDFERN RAIDERS	AA3 REDFERN RAIDERS
AA4	AA4 DUNBAR ROVERS	AA4 DUNBAR ROVERS
AA5	AA5 COOGEE	AA5 LOKOMOTIV COVE
AA6	AA6 WAVERLEY OLD BOYS	AA6 WAVERLEY OLD BOYS
AA7	AA7 SYDNEY UNIVERSITY	AA7 PAGEWOOD
AA8	AA8 LOKOMOTIV COVE	AA8 LOKOMOTIV COVE
AA9	AA9A UNSW	AA9 MAROUBRA
AA10	AA10 COOGEE	AA10 COOGEE
O35/1	O35B DUNBAR ROVERS	O35A COOGEE
O35/2	O35A PAGEWOOD	O35A PAGEWOOD
O35/3	O45 REDFERN RAIDERS	O45 REDFERN RAIDERS



**PREMIER LEAGUE FIRST GRADE**

TEAM	P	W	L	D	F	A	GD	Pts	Adj	Pt
PL PHOENIX	18	12	2	4	47	13	34	0		<b>40</b>
PL MAROUBRA UNITED	18	10	3	5	40	20	20	0		<b>35</b>
PL COOGEE UNITED	18	10	6	2	36	28	8	0		<b>32</b>
PL DUNBAR ROVERS	18	9	5	4	39	34	5	0		<b>31</b>
PL WAVERLEY OLD BOYS	18	7	6	5	34	30	4	0		<b>26</b>
PL PAGEWOOD	18	7	7	4	31	29	2	0		<b>25</b>
PL LOKOMOTIV COVE FC	18	6	9	3	33	37	-4	0		<b>21</b>
PL SYDNEY UNIVERSITY	18	4	9	5	27	45	-18	0		<b>17</b>
PL GLEBE WANDERERS	18	4	10	4	18	38	-20	0		<b>16</b>
PL MASCOT KINGS	18	2	14	2	13	44	-31	0		<b>8</b>

**PREMIER LEAGUE RESERVE GRADE**

TEAM	P	W	L	D	F	A	GD	Pts	Adj	Pt
PLR DUNBAR ROVERS	18	13	3	2	43	18	25	0		<b>41</b>
PLR WAVERLEY OLD BOYS	18	12	3	3	39	13	26	0		<b>39</b>
PLR MAROUBRA UNITED	18	11	3	4	39	17	22	0		<b>37</b>
PLR PHOENIX	18	9	7	2	33	23	10	0		<b>29</b>
PLR LOKOMOTIV COVE FC	18	8	7	3	30	34	-4	0		<b>27</b>
PLR PAGEWOOD	18	5	8	5	19	37	-18	0		<b>20</b>
PLR SYDNEY UNIVERSITY	18	6	11	1	28	33	-5	0		<b>19</b>
PLR MASCOT KINGS	18	3	9	6	16	36	-20	0		<b>15</b>
PLR COOGEE UNITED	18	4	12	2	21	32	-11	0		<b>14</b>
PLR GLEBE WANDERERS	18	3	11	4	15	40	-25	0		<b>13</b>

**ALL AGE 1**

TEAM	P	W	L	D	F	A	GD	Pts	Adj	Pt
AA1 BARNSTONEWORTH	18	13	2	3	44	20	24	0		<b>42</b>
AA1 LOKOMOTIV COVE FC	18	10	4	4	35	18	17	0		<b>34</b>
AA1 DUNBAR ROVERS	18	10	4	4	30	14	16	0		<b>34</b>
AA1 MACCABI HAKOAH	18	8	5	5	41	27	14	0		<b>29</b>
AA1R QUEENS PARK RANGERS	18	7	9	2	31	35	-4	0		<b>23</b>
AA1L QUEENS PARK LIONS	18	7	9	2	24	34	-10	0		<b>23</b>
AA1 SYDNEY UNIVERSITY	18	6	9	3	22	26	-4	0		<b>21</b>
AA1 UNSW	18	5	9	4	26	41	-15	0		<b>19</b>
AA1 PAGEWOOD BOTANY FC	18	4	11	3	21	44	-23	0		<b>15</b>
AA1 OLYMPIC EAGLES FC	18	3	11	4	16	31	-15	0		<b>13</b>

**ALL AGE 2**

TEAM	P	W	L	D	F	A	GD	Pts	Adj	Pt
AA2 DUNBAR ROVERS	18	12	4	2	32	16	16	0		<b>38</b>
AA2 BARNSTONEWORTH UNITED	18	10	1	7	38	18	20	0		<b>37</b>
AA2 BONDI UNITED	18	11	3	4	43	27	16	0		<b>37</b>
AA2 COOGEE UNITED	18	10	5	3	37	23	14	0		<b>33</b>
AA2 UNSW FOOTBALL	18	9	5	4	41	30	11	0		<b>31</b>
AA2 WAVERLEY OLD BOYS	18	6	10	2	21	36	-15	0		<b>20</b>
AA2 MAROUBRA UNITED	17	5	9	3	31	39	-8	0		<b>18</b>
AA2 SYDNEY UNIVERSITY	17	4	10	3	31	49	-18	0		<b>15</b>
AA2 QUEENS PARK	17	4	13	0	16	32	-16	0		<b>12</b>
AA2 MACCABI HAKOAH	17	2	13	2	23	43	-20	0		<b>8</b>

**ALL AGE 3**

TEAM	P	W	L	D	F	A	GD	Pts	Adj	Pt
AA3 REDFERN RAIDERS	18	13	3	2	56	15	41	0		41
AA3 QUEENS PARK	18	13	3	2	44	19	25	0		41
AA3 DUNBAR ROVERS	18	10	5	3	36	26	10	0		33
AA3 SYDNEY UNIVERSITY	18	9	5	4	39	19	20	0		31
AA3 MACCABI SENIORS	18	9	6	3	36	25	11	0		30
AA3 GLEBE WANDERERS	18	9	6	3	28	22	6	0		30
AA3 COOGEE UNITED	18	5	8	5	32	44	-12	0		20
AA3 LOKOMOTIV COVE FC	18	3	12	3	18	46	-28	0		12
AA3 PAGEWOOD	18	4	14	0	14	51	-37	0		12
AA3 UNSW	18	1	14	3	16	52	-36	0		6

**ALL AGE 4**

TEAM	P	W	L	D	F	A	GD	Pts	Adj	Pt
AA4 DUNBAR ROVERS	17	11	2	3	36	17	19	0		36
AA4 QUEENS PARK	17	11	4	1	38	22	16	0		34
AA4 COOGEE UNITED	18	9	3	4	34	18	16	0		31
AA4 LIONS FC	18	9	5	2	50	27	23	0		29
AA4 BARNSTONEWORTH	17	8	5	3	33	27	6	0		27
AA4 MASCOT KINGS	17	7	6	3	49	37	12	0		24
AA4 SYDNEY UNIVERSITY	18	3	13	0	18	40	-22	0		9
AA4 PAGEWOOD	17	2	12	2	16	44	-28	0		8
AA4 GLEBE WANDERERS	18	2	12	2	12	54	-42	0		8

**ALL AGE 5**

TEAM	P	W	L	D	F	A	GD	Pts	Adj	Pt
AA5 COOGEE UNITED	18	12	3	3	46	27	19	0		39
AA5 LOKOMOTIV COVE FC	18	11	3	4	56	32	24	0		37
AA5 MAROUBRA UNITED	18	10	5	3	51	28	23	0		33
AA5 SYDNEY UNIVERSITY	18	9	6	3	54	33	21	0		30
AA5R QUEENS PARK RANGERS	18	8	5	5	41	33	8	0		29
AA5 HEFFRON HAWKS	18	8	7	3	41	41	0	0		27
AA5L QUEENS PARK LIONS	18	7	8	3	49	36	13	0		24
AA5 KYTHERIANS	18	7	9	2	32	39	-7	0		23
AA5 REDFERN RAIDERS	18	3	13	2	23	58	-35	0		11
AA5 PAGEWOOD BOTANY FC	18	0	16	2	10	76	-66	0		2

**ALL AGE 6**

TEAM	P	W	L	D	F	A	GD	Pts	Adj	Pt
AA6 WAVERLEY OLD BOYS	18	13	3	2	46	20	26	0		41
AA6 REDFERN RAIDERS	18	12	4	2	50	28	22	0		38
AA6 QUEENS PARK	18	11	5	2	41	22	19	0		35
AA6 DUNBAR ROVERS	18	10	6	2	37	23	14	0		32
AA6 COOGEE UNITED	18	10	6	2	22	18	4	0		32
AA6 LOKOMOTIV COVE FC	18	9	8	1	46	28	18	0		28
AA6 SYDNEY UNIVERSITY	18	8	8	2	40	31	9	0		26
AA6 LIONS FC	18	5	10	3	27	35	-8	0		18
AA6 OLYMPIC EAGLES FC	18	2	15	1	15	59	-44	0		7
AA6 PAGEWOOD	18	1	16	1	10	70	-60	0		4

**ALL AGE 7**

TEAM	P	W	L	D	F	A	GD	Pts	Adj	Pt
AA7 SYDNEY UNIVERSITY	18	11	1	6	40	10	30	0		<b>39</b>
AA7 COOGEE UNITED	18	12	3	3	43	19	24	0		<b>39</b>
AA7 PAGEWOOD BOTANY FC	18	11	3	4	36	23	13	0		<b>37</b>
AA7 LOKOMOTIV COVE FC	18	9	6	3	33	32	1	0		<b>30</b>
AA7 MASCOT KINGS	18	9	7	2	34	40	-6	0		<b>29</b>
AA7 DUNBAR ROVERS	18	8	9	1	34	29	5	0		<b>25</b>
AA7 REDFERN RAIDERS	18	6	10	2	31	31	0	0		<b>20</b>
AA7 MACCABI HAKOAH	17	4	11	2	18	36	-18	0		<b>14</b>
AA7 OLYMPIC EAGLES FC	18	3	12	3	23	51	-28	0		<b>12</b>
AA7 QUEENS PARK	17	1	12	4	16	37	-21	0		<b>7</b>

**ALL AGE 8**

TEAM	P	W	L	D	F	A	GD	Pts	Adj	Pt
AA8 LOKOMOTIV COVE FC	18	15	1	2	58	7	51	0		<b>47</b>
AA8 MAROUBRA UNITED	18	11	5	2	46	28	18	0		<b>35</b>
AA8 DUNBAR ROVERS	18	10	6	2	42	31	11	0		<b>32</b>
AA8 QUEENS PARK	18	9	5	4	39	29	10	0		<b>31</b>
AA8 COOGEE UNITED	18	7	5	6	51	29	22	0		<b>27</b>
AA8B SYDNEY UNIVERSITY	18	7	7	4	29	36	-7	0		<b>25</b>
AA8 EASTS FC	18	8	10	0	37	30	7	0		<b>24</b>
AA8A SYDNEY UNIVERSITY	18	5	9	4	37	53	-16	0		<b>19</b>
AA8 WAVERLEY OLD BOYS	18	2	14	2	19	50	-31	0		<b>8</b>
AA8 REDFERN RAIDERS	18	2	14	2	14	79	-65	0		<b>8</b>

**ALL AGE 9**

TEAM	P	W	L	D	F	A	GD	Pts	Adj	Pt
AA9A UNSW AA9A	18	12	1	5	52	18	34	0		<b>41</b>
AA9 MAROUBRA UNITED	18	13	3	2	48	23	25	0		<b>41</b>
AA9 COOGEE UNITED	18	13	4	1	54	31	23	0		<b>40</b>
AA9 HEFFRON HAWKS	18	11	5	2	46	26	20	0		<b>35</b>
AA9 LIONS FC	18	9	7	2	31	27	4	0		<b>29</b>
AA9 QUEENS PARK FC	18	7	10	1	45	41	4	0		<b>22</b>
AA9 WAVERLEY OLD BOYS	18	5	8	5	36	42	-6	0		<b>20</b>
AA9B UNSW FOOTBALL	18	6	11	1	37	51	-14	0		<b>19</b>
AA9 LOKOMOTIV COVE FC	18	2	15	1	19	49	-30	0		<b>7</b>
AA9 PAGEWOOD BOTANY FC	18	2	16	0	12	72	-60	0		<b>6</b>

**ALL AGE 10**

TEAM	P	W	L	D	F	A	GD	Pts	Adj	Pt
AA10 COOGEE UNITED	18	12	3	2	51	20	31	0		<b>38</b>
AA10A UNSW FOOTBALL	18	11	3	3	52	18	34	0		<b>36</b>
AA10B LOKOMOTIV COVE FC	18	9	7	1	47	33	14	0		<b>28</b>
AA10 WAVERLEY OLD BOYS	16	9	7	0	37	38	-1	0		<b>27</b>
AA10 EASTS FC	17	6	8	2	25	33	-8	0		<b>20</b>
AA10B EASTS FC	16	5	10	1	31	39	-8	0		<b>16</b>
AA10A LOKOMOTIV COVE FC	18	4	13	1	22	73	-51	0		<b>13</b>
AA10 HEFFRON HAWKS	13	2	7	4	21	32	-11	0		<b>10</b>

### OVER 35 DIVISION 1

TEAM	P	W	L	D	F	A	GD	Pts	Adj	Pt
O35B DUNBAR ROVERS	17	13	0	4	70	12	58	0		<b>43</b>
O35A COOGEE UNITED	17	10	4	3	54	32	22	0		<b>33</b>
O35 OLYMPIC EAGLES FC	17	8	4	5	32	23	9	0		<b>29</b>
O351 PAGEWOOD	17	8	6	3	33	26	7	0		<b>27</b>
O35A DUNBAR ROVERS	17	5	7	5	27	33	-6	0		<b>20</b>
O35A MAROUBRA UNITED	17	6	10	1	26	44	-18	0		<b>19</b>
O35 HEFFRON HAWKS	17	5	9	3	30	47	-17	0		<b>18</b>
O35 BARNSTONEWORTH	17	1	16	0	14	69	-55	0		<b>3</b>

### OVER 35 DIVISION 2

TEAM	P	W	L	D	F	A	GD	Pts	Adj	Pt
O35A PAGEWOOD BOTANY FC	18	14	1	1	49	12	37	0		<b>43</b>
O35 REDFERN RAIDERS	18	12	3	1	41	18	23	0		<b>37</b>
O35R QUEENS PARK FC	18	10	4	2	40	21	19	0		<b>32</b>
O35B COOGEE UNITED	18	7	8	1	41	40	1	0		<b>22</b>
O35 LOKOMOTIV COVE FC	18	6	7	3	27	24	3	0		<b>21</b>

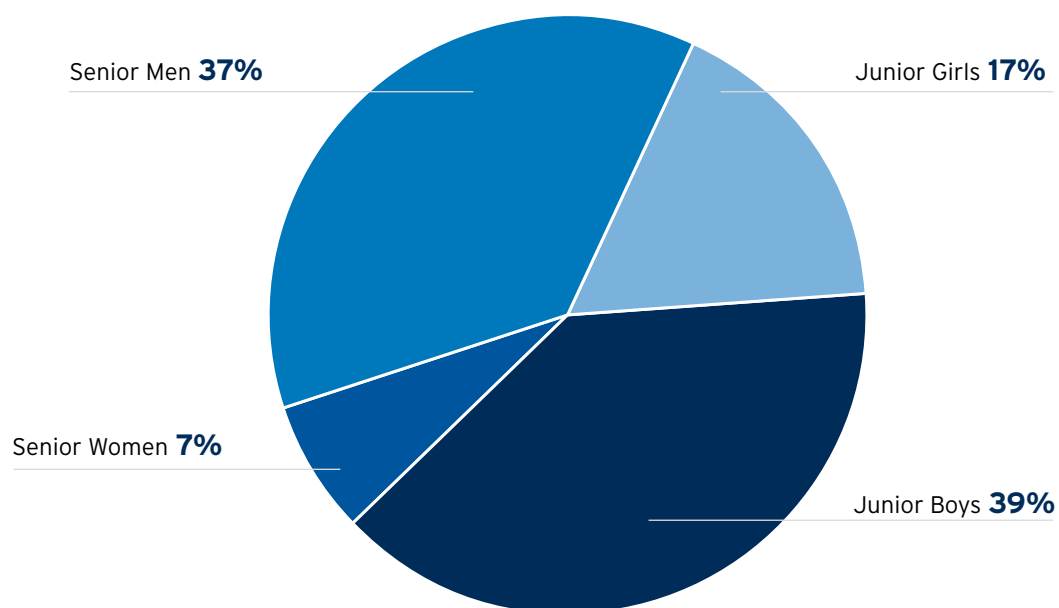
### OVER 35 DIVISION 3

TEAM	P	W	L	D	F	A	GD	Pts	Adj	Pt
O45 REDFERN RAIDERS	7	6	0	1	29	10	19	-17		<b>19</b>
O35B PAGEWOOD	7	4	2	1	11	5	6	-15		<b>13</b>
O45A MAROUBRA UNITED	7	4	2	1	17	13	4	-15		<b>13</b>
O35B MAROUBRA UNITED	7	3	3	1	11	14	-3	-11		<b>10</b>
O35C DUNBAR ROVERS	7	2	2	3	12	12	0	-14		<b>9</b>
O35 MACCABI HAKOAH	7	3	4	0	10	14	-4	-13		<b>9</b>
O35L QUEENS PARK FC	7	2	4	1	15	18	-3	-4		<b>7</b>
O45B MAROUBRA UNITED	7	0	7	0	4	23	-19	-6		<b>0</b>



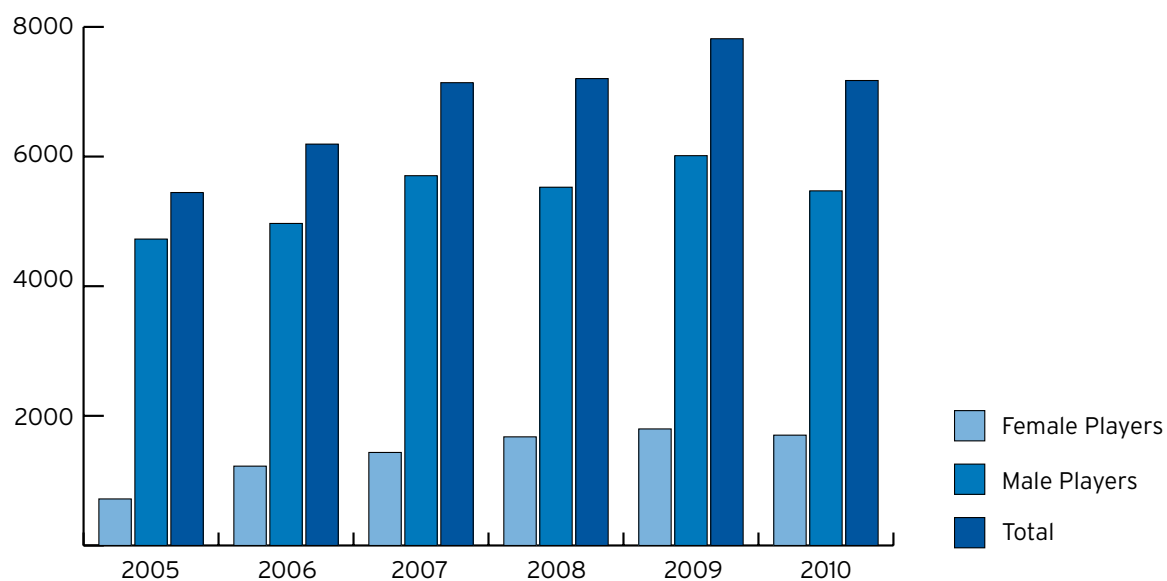
## ASSOCIATION STATISTICS

### JUNIORS V SENIORS 2010

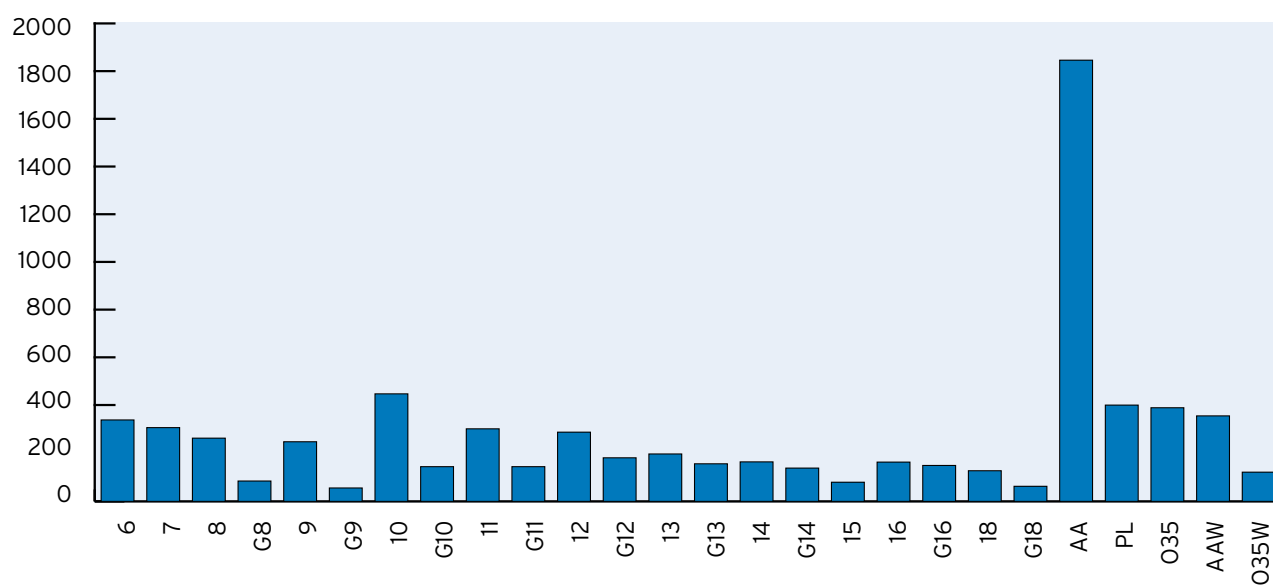


## PLAYER STATISTICS

### MALE VS FEMALE



## AGE COMPARISON 2010







## EASTERN SUBURBS FOOTBALL ASSOCIATION

The Board and staff of the Eastern Suburbs Football Association wish to thank our various and valuable partners for their support in developing the world game in the Eastern Suburbs.



**Klems Awards  
& Engraving**

